

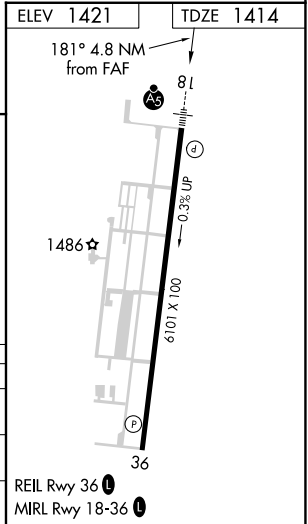
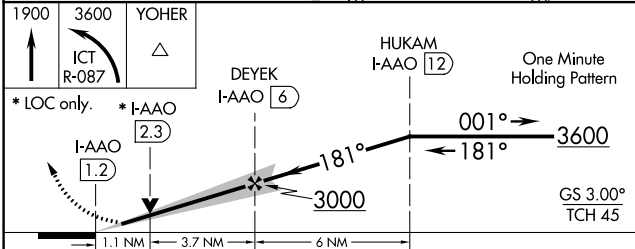
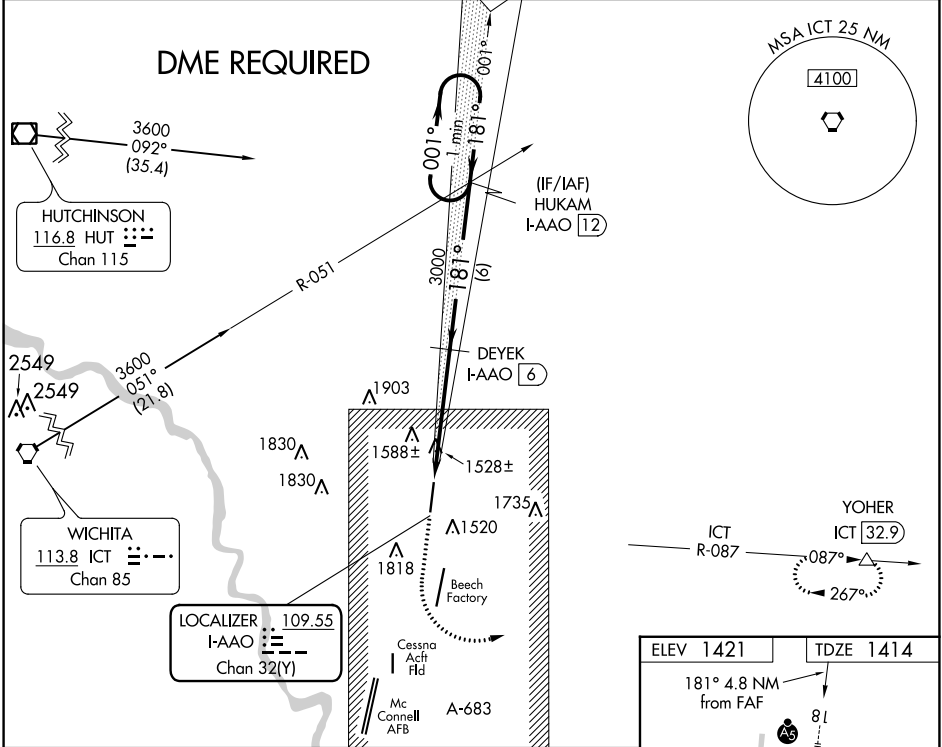
LOC/DME I-AAO 109.55 Chan 32 (Y)	APP CRS 181°	Rwy Idg TDZE Apt Elev	6101 1414 1421
---	------------------------	-----------------------------	---

ILS or LOC RWY 18

COLONEL JAMES JABARA (A.A.O)

<p>DME required.</p>	<p>MALSR</p>	<p>MISSED APPROACH: Climb to 1900 then climbing left turn to 3600 on ICT VORTAC R-087° to YOHER/ICT 32.9 DME and hold.</p>	
----------------------	--------------	--	--

ASOS 134.025	WICHITA APP CON 134.8 269.1	CLNC DEL 125.0	UNICOM 122.7 (CTAF) 0
------------------------	---------------------------------------	--------------------------	---------------------------------



CATEGORY	A	B	C	D
S-ILS 18	1614-1/2		200 (200-1/2)	
S-LOC 18	1800-1/2	386 (400-1/2)	1800-5/8 386 (400-3/8)	1800-3/4 386 (400-3/4)
CIRCLING	1880-1 459 (500-1)	1940-1 519 (600-1)	2120-2 699 (700-2)	2220-2-1/2 799 (800-2-1/2)

NC-2, 08 AUG 2024 to 05 SEP 2024

NC-2, 08 AUG 2024 to 05 SEP 2024