

WAAS CH 42607 W36A	APP CRS 004°	Rwy Idg TDZE Apt Elev	5003 36 39
--	------------------------	-----------------------------	---------------------------------------

RNAV (GPS) RWY 36

FALSE RIVER RGNL (H.Z.R.)

RNP APCH

▼ For uncompensated Baro-VNAV systems, LNAV/VNAV NA below -15°C or above 54°C. Baro-VNAV and VDP NA when using Baton Rouge altimeter setting. When local altimeter setting not received, use Baton Rouge altimeter setting and increase all DA 51 feet and all visibility 1/8 SM; increase all MDA 60 feet, and LNAV Cat C/D visibility 1/8 SM and Circling Cat C visibility 1/4 SM. For inop ALS, increase LNAV/VNAV Cats A/B visibility to 7/8 mile. For inop ALS when using Baton Rouge altimeter setting, increase LNAV/VNAV visibility to 1 SM and LNAV Cat C/D visibility to 1 1/8 SM.

ODALS

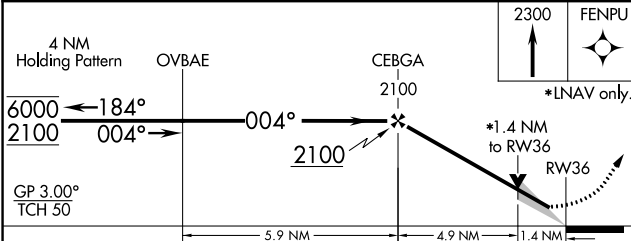
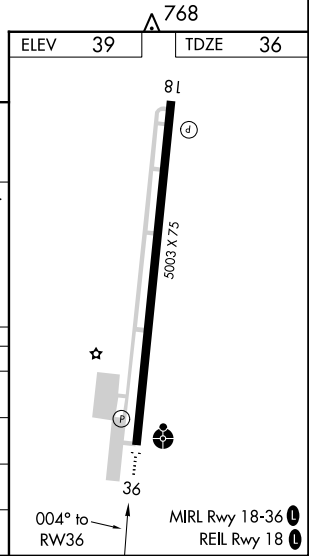
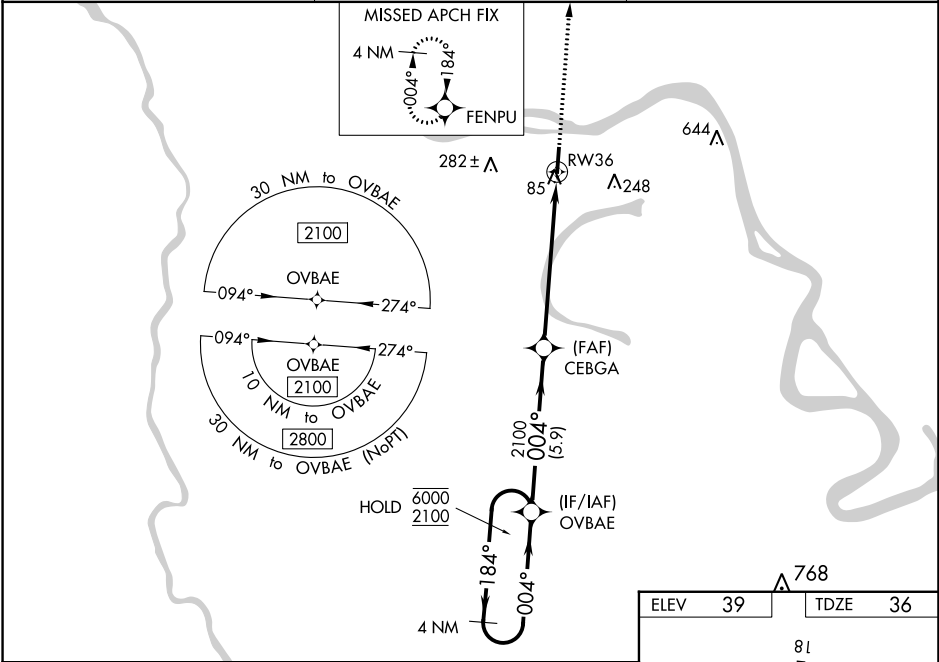


MISSED APPROACH:
Climb to 2300 direct FENPU and hold.

AWOS-3PT
121.250

BATON ROUGE APP CON*
120.3 278.3

UNICOM
122.8 (CTAF)



CATEGORY	A	B	C	D
LPV DA		286-3/4	250 (300-3/4)	
LNAV/VNAV DA		307-3/4	271 (300-3/4)	
LNAV MDA	520-3/4 484 (500-3/4)	520-1 484 (500-1)	520-1 1/4 484 (500-1 1/4)	484 (500-1 1/4)
CIRCLING	520-1	481 (600-1)	600-1 1/2 561 (600-1 1/2)	600-2 561 (600-2)

SC-4, 08 AUG 2024 to 05 SEP 2024

SC-4, 08 AUG 2024 to 05 SEP 2024