

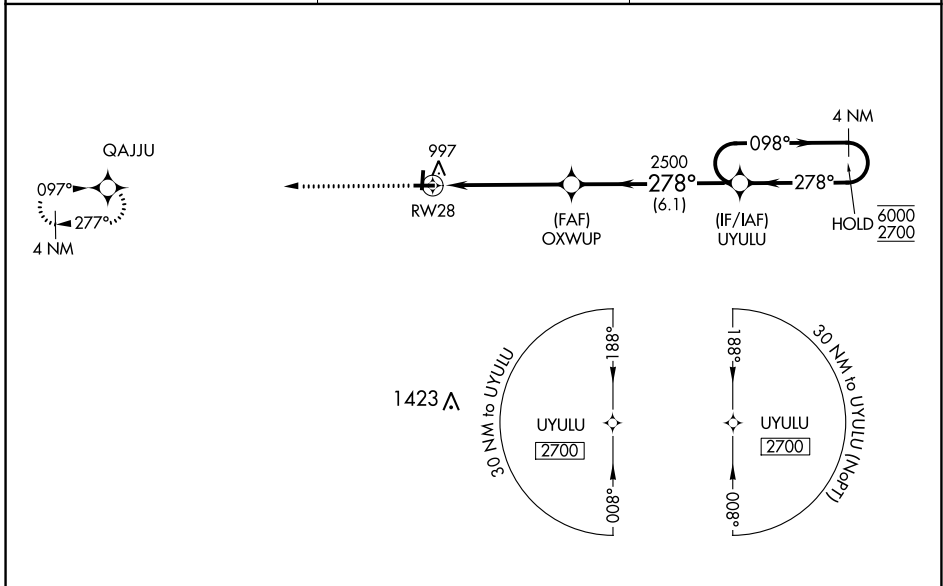
WAAS CH 62944 W28A	APP CRS 278°	Rwy Idg TDZE 881 Apt Elev 895
--	------------------------	---

RNAV (GPS) RWY 28

MARLETTE TOWNSHIP (77G)

RNP APCH - GPS.	<p>▽ Rwy 28 helicopter visibility reduction below $\frac{3}{4}$ SM NA. Baro-VNAV NA. Use Caro altimeter setting, when not received, use Bad Axe altimeter setting and increase LPV DA to 1216 feet; increase LNAV/VNAV DA to 1279 feet; increase all MDAs 20 feet and Circling visibility Cat D $\frac{1}{4}$ SM. Circling Rwy 10, 19 NA at night.</p>	MISSED APPROACH: Climb to 3000 direct QAJJU and hold.
-----------------	--	--

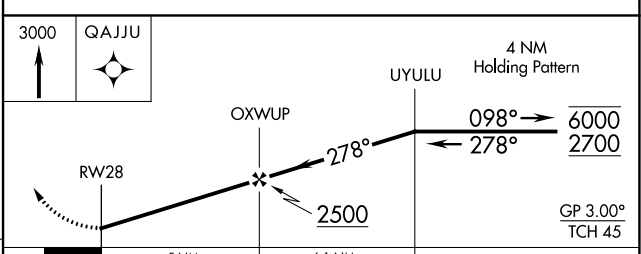
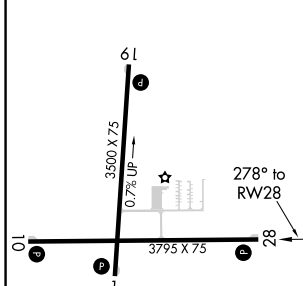
CFS AWOS-3 119.275	CLEVELAND CENTER 127.7 290.425	UNICOM 122.8 (CTAF) 0
------------------------------	--	---------------------------------



EC-1, 08 AUG 2024 to 05 SEP 2024

EC-1, 08 AUG 2024 to 05 SEP 2024

ELEV 895	TDZE 881
----------	----------



CATEGORY	A	B	C	D
LPV DA		1199-1	318 (400-1)	
LNAV/VNAV DA		1262-1 $\frac{1}{8}$	381 (400-1 $\frac{1}{8}$)	
LNAV MDA	1340-1	459 (500-1)	1340-1 $\frac{3}{8}$	459 (500-1 $\frac{3}{8}$)
C CIRCLING	1420-1	525 (600-1)	1420-1 $\frac{1}{2}$ 525 (600-1 $\frac{1}{2}$)	1560-2 665 (700-2)