

WAAS CH 69403 W15A	APP CRS 148°	Rwy Idg TDZE Apt Elev	4000 361 367
---------------------------------	------------------------	-----------------------------	---

RNAV (GPS) RWY 15

COULTER FLD (CFD)

RNP APCH. Baro-VNAV NA. Rwy 15 helicopter visibility reduction below 3/4 SM NA. Use College Station altimeter setting; when not received, use Caldwell altimeter setting and increase all DA 31 feet and all MDA 40 feet.

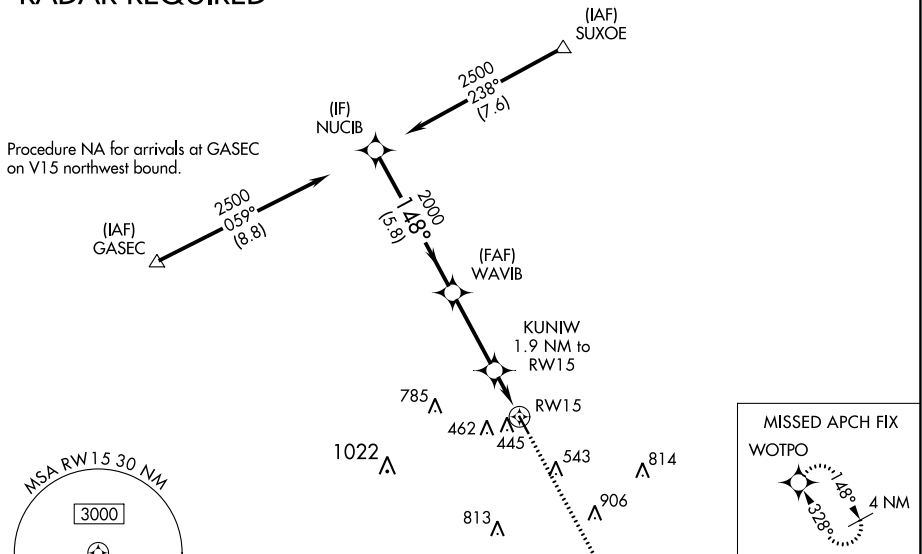
MISSED APPROACH: Climb to 2000 direct WOTPO and hold.

AWOS-3PT 125.975	CLL ASOS 126.85	HOUSTON APP CON 134.3 360.85	UNICOM 123.0 (CTAF) 0
----------------------------	---------------------------	--	---------------------------------

Procedure NA for arrivals at SUXOE on V369 northwest bound.

RADAR REQUIRED

Procedure NA for arrivals at GASEC on V15 northwest bound.

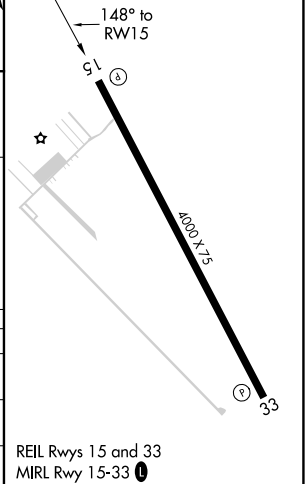
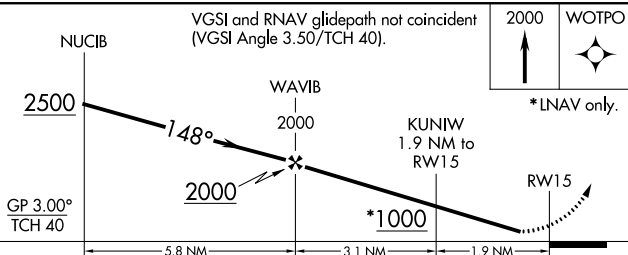


SC-5, 08 AUG 2024 to 05 SEP 2024

SC-5, 08 AUG 2024 to 05 SEP 2024

ELEV 367	TDZE 361
-----------------	-----------------

VGSI and RNAV glidepath not coincident (VGSI Angle 3.50/TCH 40).



CATEGORY	A	B	C	D
LPV DA	636-1	275 (300-1)		NA
RNAV/VNAV DA	636-1	275 (300-1)		NA
RNAV MDA	720-1	359 (400-1)		NA

REIL Rwy 15 and 33
MIRL Rwy 15-33 0