

WAAS CH 58040 W07A	APP CRS 071°	Rwy Idg TDZE Apt Elev	3504 1255 1255
--	------------------------	-----------------------------	---

RNAV (GPS) RWY 7

HAWKINS COUNTY (RVN)

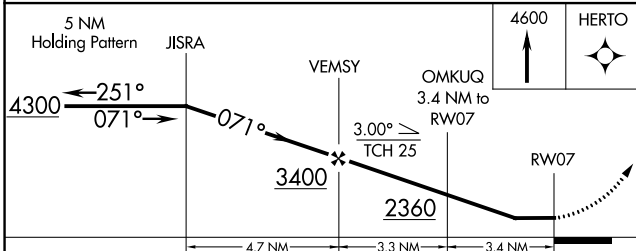
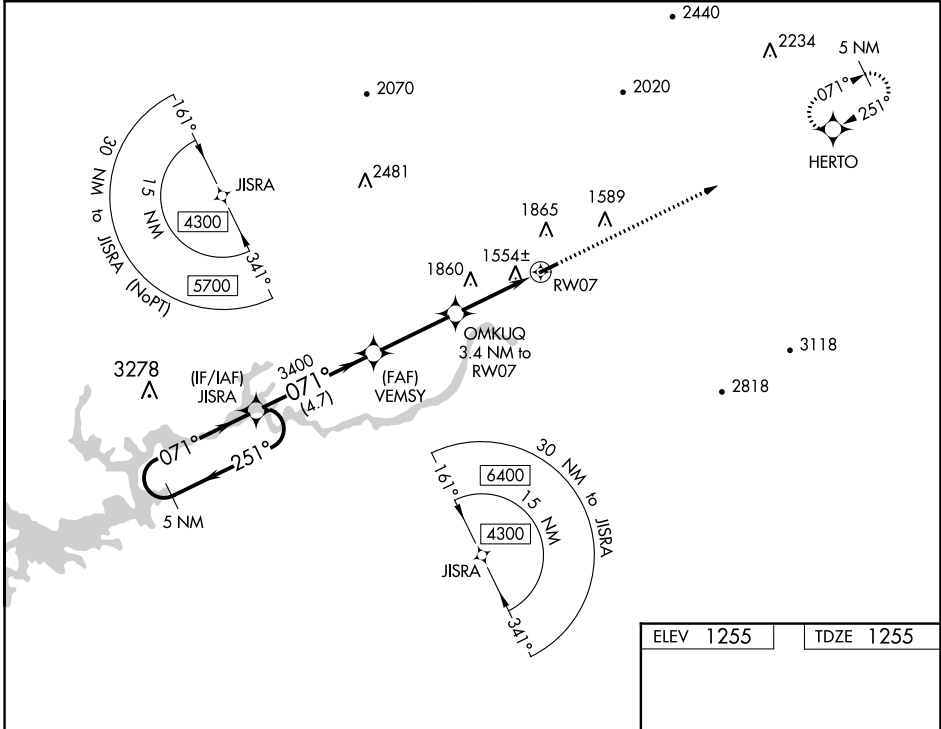
RNP APCH - GPS.

NA Procedure NA at night. Obtain local altimeter setting on CTAF; when not received, use Tri-Cities Rgnl altimeter setting and increase all MDA 120 feet, increase LP Cat C visibility ¼ SM, increase LNAV Cat A and Circling Cat B visibility ¼ SM. Rwy 7, 25 helicopter visibility reduction below 1 SM NA.

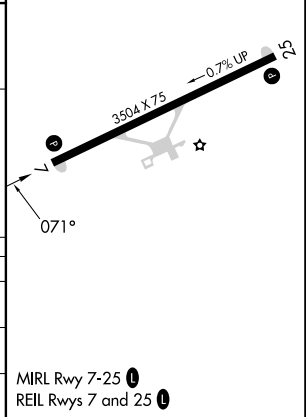
MISSED APPROACH:
Climb to 4600 direct HERTO and hold, continue climb-in-hold to 4600.

TRI CITY APP CON ★
128.05 317.5

UNICOM
122.8 (CTAF)



ELEV 1255	TDZE 1255
-----------	-----------



CATEGORY	A	B	C	D
LP MDA	1860-1	605 (700-1)	1860-1¾ 605 (700-1¾)	NA
LNAV MDA	2040-1 785 (800-1)	2040-1¼ 785 (800-1¼)	2040-2½ 785 (800-2½)	NA
CIRCLING	2180-1¼	925 (1000-1¼)	2320-3 1065 (1100-3)	NA

SE-1, 08 AUG 2024 to 05 SEP 2024

SE-1, 08 AUG 2024 to 05 SEP 2024

MIRL Rwy 7-25
REIL Rws 7 and 25