

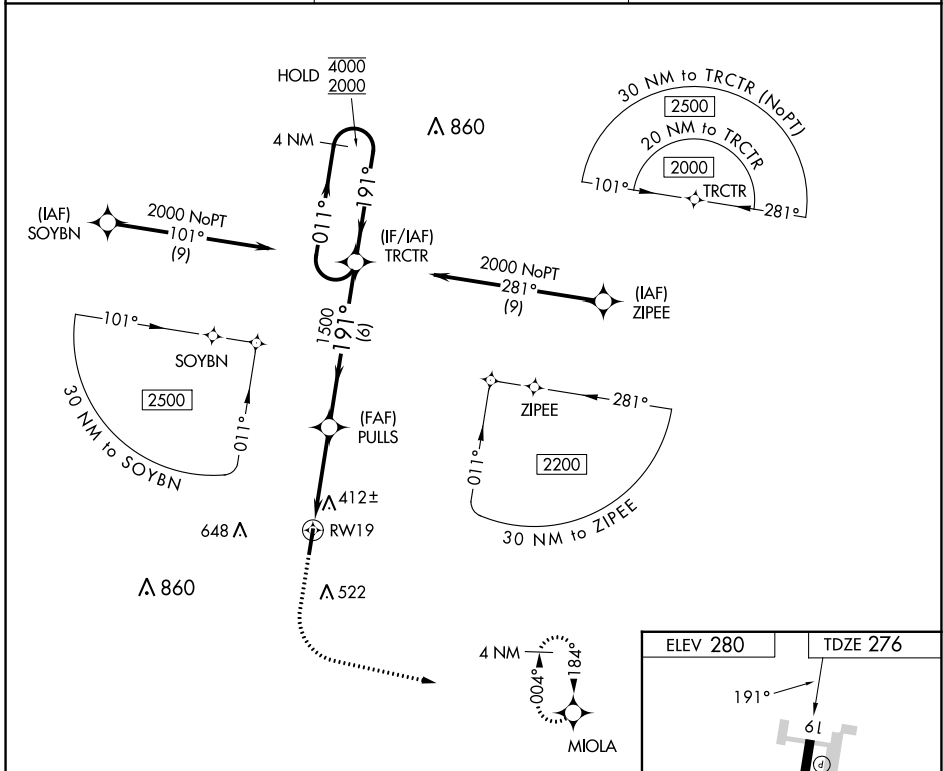
APP CRS	Rwy Idg	<b>5003</b>
<b>191°</b>	TDZE	<b>276</b>
	Apt Elev	<b>280</b>

# RNAV (GPS) RWY 19

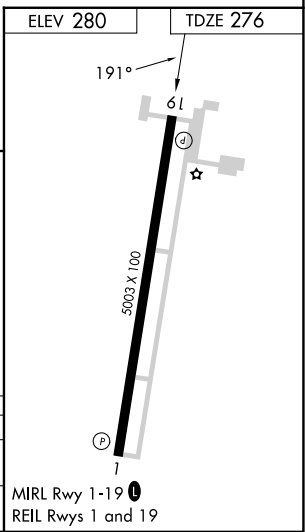
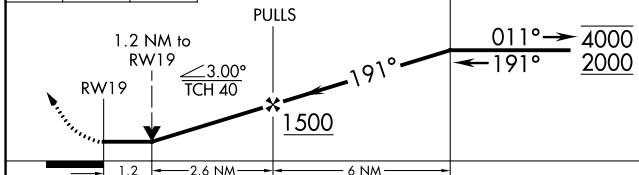
COVINGTON MUNI (M04)

RNP APCH - GPS.	MISSED APPROACH: Climb to 1400 then climbing left turn to 3000 direct MIOLA and hold.
Rwy 19 helicopter visibility reduction below 3/4 SM NA.	

AWOS-3 <b>118.575</b>	MEMPHIS APP CON <b>125.8 338.3</b>	UNICOM <b>123.0 (CTAF)</b>
--------------------------	---------------------------------------	-------------------------------



1400 3000 MIOLA VGSI and descent angles not coincident (VGSI Angle 3.00/TCH 29). 4 NM Holding Pattern



CATEGORY	A	B	C	D
LNVA MDA	680-1	404 (400-1)	680-1½	404 (400-1½)
CIRCLING	760-1 480 (500-1)	840-1 560 (600-1)	960-2 680 (700-2)	960-2¼ 680 (700-2¼)

SE-1, 08 AUG 2024 to 05 SEP 2024

SE-1, 08 AUG 2024 to 05 SEP 2024