

WAAS CH <b>86906</b> <b>W18A</b>	APP CRS <b>184°</b>	Rwy Idg TDZE <b>842</b> Apt Elev <b>842</b>	<b>5002</b>
--	------------------------	---	-------------

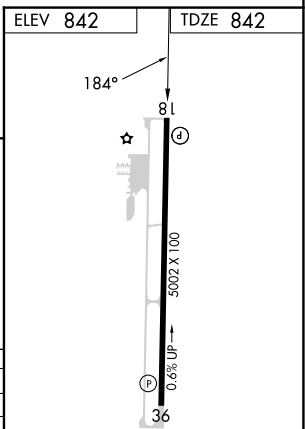
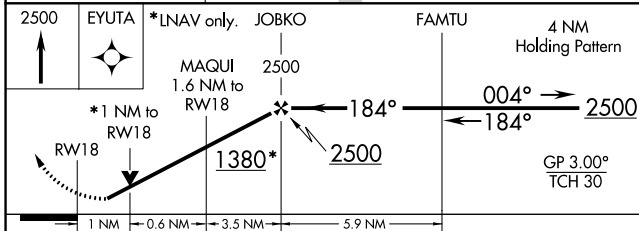
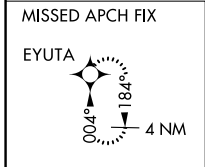
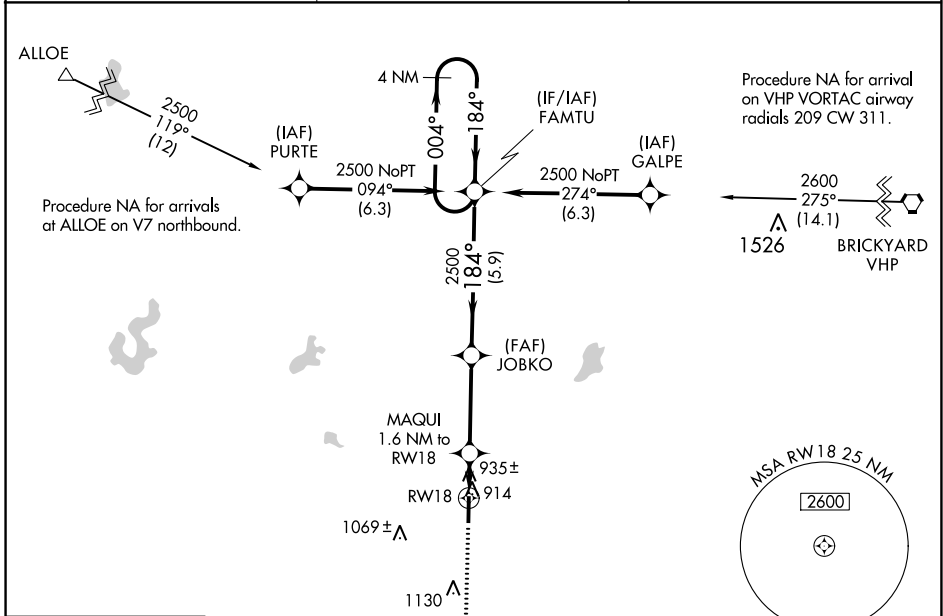
# RNAV (GPS) RWY 18

PUTNAM COUNTY RGNL (GPC)

**▼** For uncompensated Baro-VNAV systems, LNAV/VNAV NA below -1.6°C (4°F) or above 54°C (130°F). Rwy 18 helicopter visibility reduction below ¾ SM NA. DME/DME RNP-0.3 NA.

**MISSED APPROACH:** Climb to 2500 direct EYUTA and hold.

AWOS-3PT <b>118.125</b>	INDIANAPOLIS APP CON <b>119.05 317.8</b>	UNICOM <b>122.8 (CTAF) ①</b>
----------------------------	---	---------------------------------



CATEGORY	A	B	C	D
LPV DA		1107-7/8	265 (300-7/8)	
LNAV/VNAV DA		1106-7/8	264 (300-7/8)	
LNAV MDA		1200-1	358 (400-1)	
<b>ⓐ</b> CIRCLING	1280-1 438 (500-1)	1400-1 558 (600-1)	1480-1 3/4 638 (700-1 3/4)	1480-2 638 (700-2)

MIRL Rwy 18-36 ①  
REIL Rwy 18

EC-2, 08 AUG 2024 to 05 SEP 2024

EC-2, 08 AUG 2024 to 05 SEP 2024