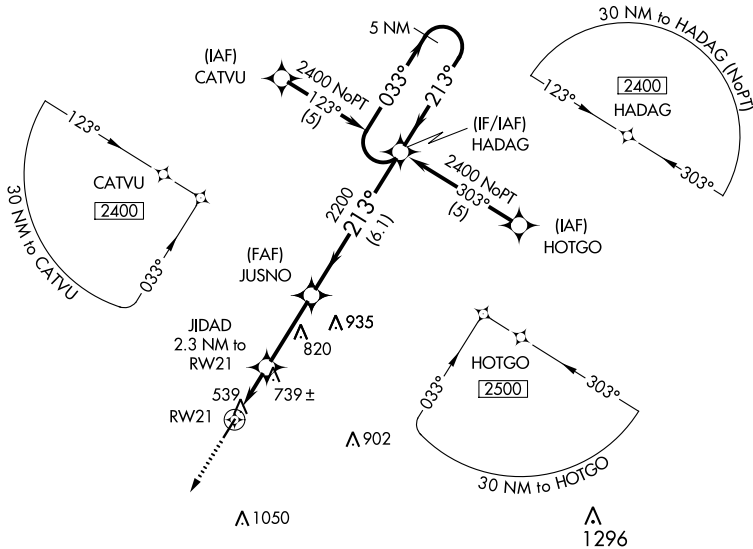


APP CRS	Rwy Idg	4400
213°	TDZE	467
	Apt Elev	467

RNAV (GPS) RWY 21

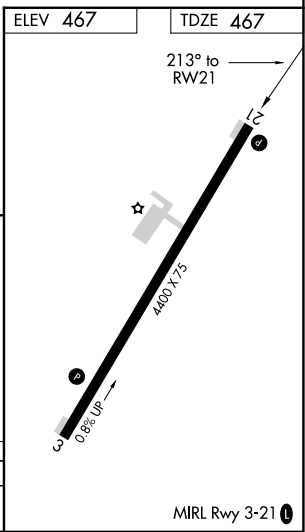
RIPLEY (25M)

RNP APCH.		MISSED APPROACH: Climb to 2500 direct CEDAS and hold.
<p>▼ Use Corinth altimeter setting; when not received, use Tupelo altimeter setting and increase all MDA 40 feet, and increase LNAV Cat C visibility 1/4 mile. Procedure NA at night. Rwy 21 helicopter visibility reduction below 1 SM NA.</p> <p>▲ NA</p>		
CRX AWOS-3PT 118.675	MEMPHIS CENTER 135.9 260.6	UNICOM 122.8 (CTAF) 0



SC-4, 08 AUG 2024 to 05 SEP 2024

SC-4, 08 AUG 2024 to 05 SEP 2024



2500	CEDAS	VGSI and descent angles not coincident. (VGSI Angle 3.50/TCH 16)		5 NM Holding Pattern
↑	✧	JIDAD 2.3 NM to RW21	JUSNO	HADAG
RW21	↙	↘	↘	↘
	1220	2200	2400	2400
	2.3 NM	2.9 NM	6.1 NM	
CATEGORY	A	B	C	D
LNAV MDA	1060-1	593 (600-1)	1060-1 1/2 593 (600-1 1/2)	NA