

RIPLEY, MISSISSIPPI

AL-6339 (FAA)

21252

VORTAC HLI 112.4 Chan 71	APP CRS 094°	Rwy Idg TDZE Apt Elev 467	N/A N/A 467
--	------------------------	---	--

VOR/DME-A RIPLEY (25M)

▼ Use Corinth altimeter setting; when not received, use Tupelo altimeter setting and increase all MDAs 40 feet, and visibility Cat C ¼ SM.
▲ NA Procedure NA at night. Helicopter visibility reduction below 1 SM NA.

MISSED APPROACH: Climbing left turn to 3000 via heading 251° and HLI VORTAC R-094 to HLI VORTAC and hold.

CRX AWOS-3PT 118.675	MEMPHIS CENTER 135.9 260.6	UNICOM 122.8 (CTAF) 1
--------------------------------	--------------------------------------	---------------------------------

Procedure NA for arrivals on HLI VORTAC
airway radials 045 CW 112.

IAF
HOLLY SPRINGS
112.4 HLI
Chan 71

(IF) TIRED
HLI 10

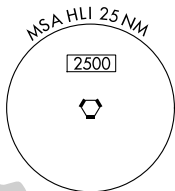
NUTTE
HLI 20

MACVE
HLI 23.8

▲ 935

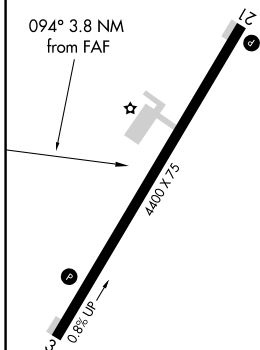
▲ 902

▲ 1050



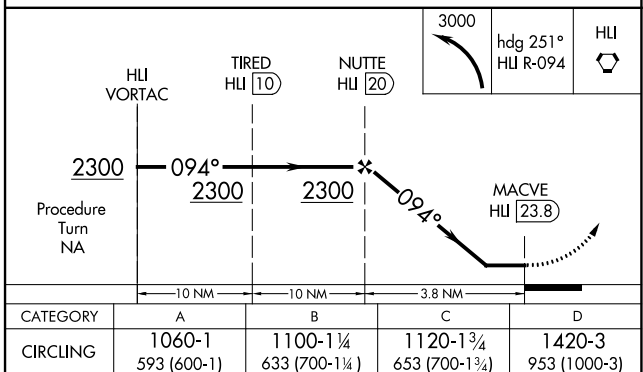
ELEV 467

094° 3.8 NM from FAF



MIRL Rwy 3-21 1

1126
▲



RIPLEY, MISSISSIPPI
Amdt 2B 09SEP21

34°43'N-89°01'W

RIPLEY (25M) VOR/DME-A

SC-4, 08 AUG 2024 to 05 SEP 2024

SC-4, 08 AUG 2024 to 05 SEP 2024