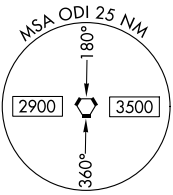


VORTAC ODI 117.9 Chan 126	APP CRS 184°	Rwy Idg TDZE Apt Elev 1179	N/A N/A 1179
-----------------------------------------------	------------------------	-----------------------------------------	-----------------------------------------

VOR-A
HOUSTON COUNTY (CHU)

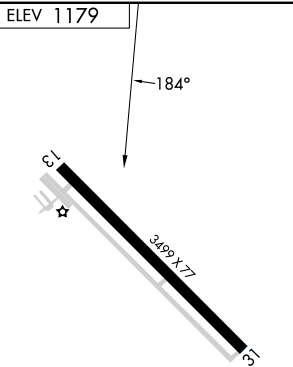
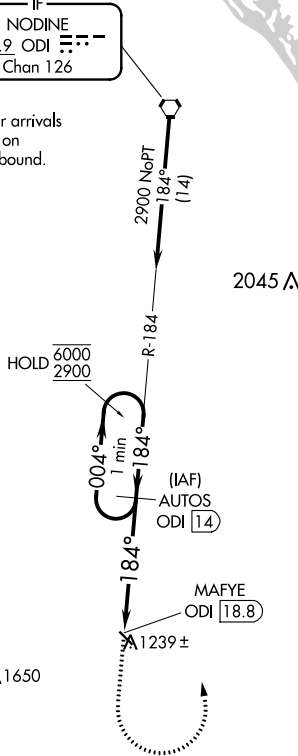
DME required.	Use La Crosse Rgnl altimeter setting. Procedure NA at night.	MISSED APPROACH: Climb to 2900 then left turn on ODI VORTAC R-184 to AUTOS/ODI 14 DME and hold.
▼ ▲ NA		

LSE ASOS 124.95	MINNEAPOLIS CENTER 128.6 363.0	CTAF 122.9 0
---------------------------	------------------------------------------	------------------------



IF
NODINE
117.9 ODI
Chan 126

Procedure NA for arrivals
at ODI VORTAC on
V129 northwest bound.



2900 ↑	AUTOS ODI 14 R-184	AUTOS ODI 14	One Minute Holding Pattern
MAFYE ODI 18.8		6000 2900	004° → ← 184°
4.8 NM			
CATEGORY	A	B	C D
CIRCLING	1820-1	641 (700-1)	NA

NC-1, 08 AUG 2024 to 05 SEP 2024

NC-1, 08 AUG 2024 to 05 SEP 2024