

BORRN SIX DEPARTURE (RNAV)

SC-5, 08 AUG 2024 to 05 SEP 2024

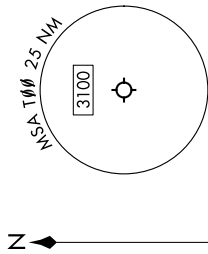
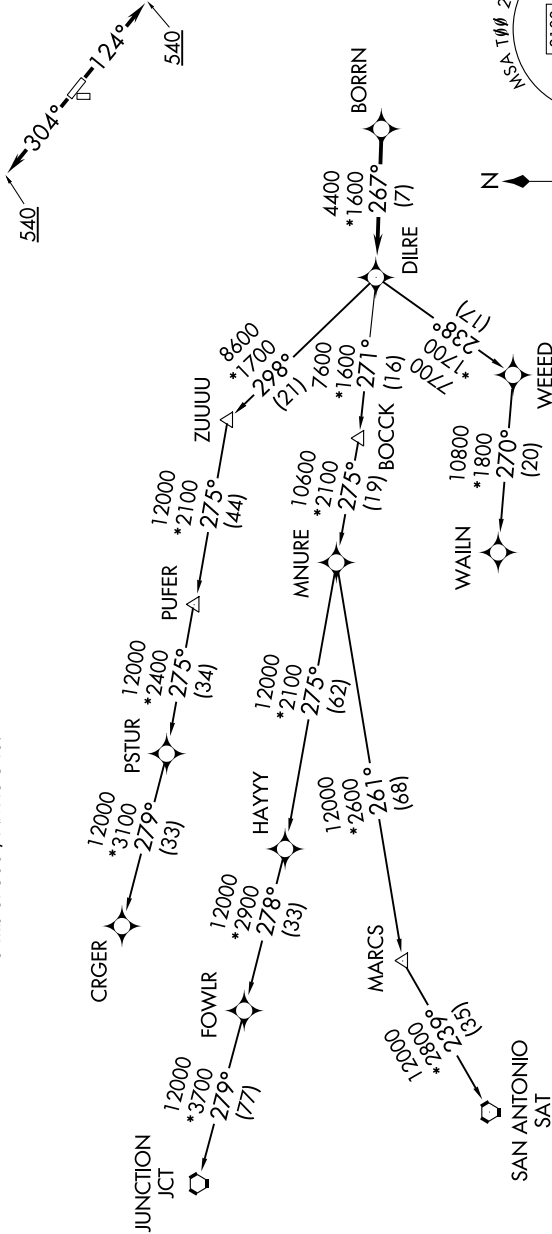
CTAF
122.9
HOUSTON DEP CON
134.45 284.0

TAKEOFF MINIMUMS

Rwys 17, 35: NA - Environmental.
Rwys 12, 30: Standard with minimum
climb of 500'/NM to 540.

RNAV 1 - DME/DME/IRU or GPS.
RADAR required.

TOP ALTITUDE:
ASSIGNED BY ATC



NOTE: CRGR-TRANSITION ATC assigned only
for aircraft departing 54T, AXH, EFD, GLS,
HPY, IWS, LBX, LVJ, SGR, TME, T00, T41.

(NARRATIVE ON FOLLOWING PAGE)

NOTE: Chart not to scale.

BORRN SIX DEPARTURE (RNAV)

SC-5, 08 AUG 2024 to 05 SEP 2024