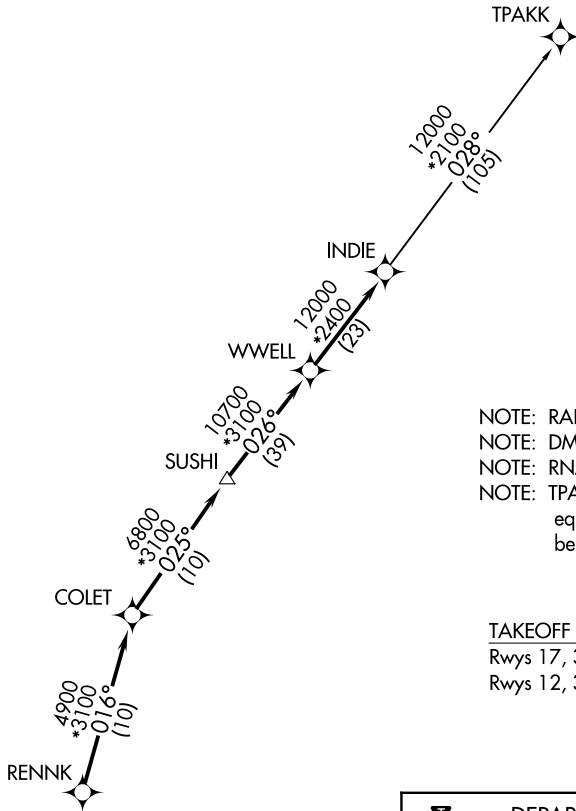


# INDIE EIGHT DEPARTURE (RNAV)

CTAF  
122.9  
HOUSTON DEP CON  
134.45 284.0

**TOP ALTITUDE:  
ASSIGNED BY ATC**



- NOTE: RADAR required.
- NOTE: DME/DME/IRU or GPS required.
- NOTE: RNAV 1.
- NOTE: TPAKK TRANSITION: For non GPS equipped aircraft TNV DME must be operational.

### TAKEOFF MINIMUMS

Rwys 17, 35: NA-Environmental  
 Rwys 12, 30: Standard with minimum climb of 500' per NM to 540.



### DEPARTURE ROUTE DESCRIPTION

**TAKEOFF RUNWAY 12:** Climb on heading 124° to 540 for RADAR vectors to RENNK, thence . . . .

**TAKEOFF RUNWAY 30:** Climb on heading 304° to 540 for RADAR vectors to RENNK, thence . . . .

. . . . on track 016° to COLET, then on track 025° to SUSHI, then on track 026° to WWELL, then on track 026° to INDIE, then on (transition). Maintain ATC assigned altitude. Expect filed altitude 10 minutes after departure.

### TPAKK TRANSITION (INDIE8.TPAKK)

NOTE: Chart not to scale.

