

# KARR SEVEN DEPARTURE (RNAV)

**TOP ALTITUDE:  
ASSIGNED BY ATC**

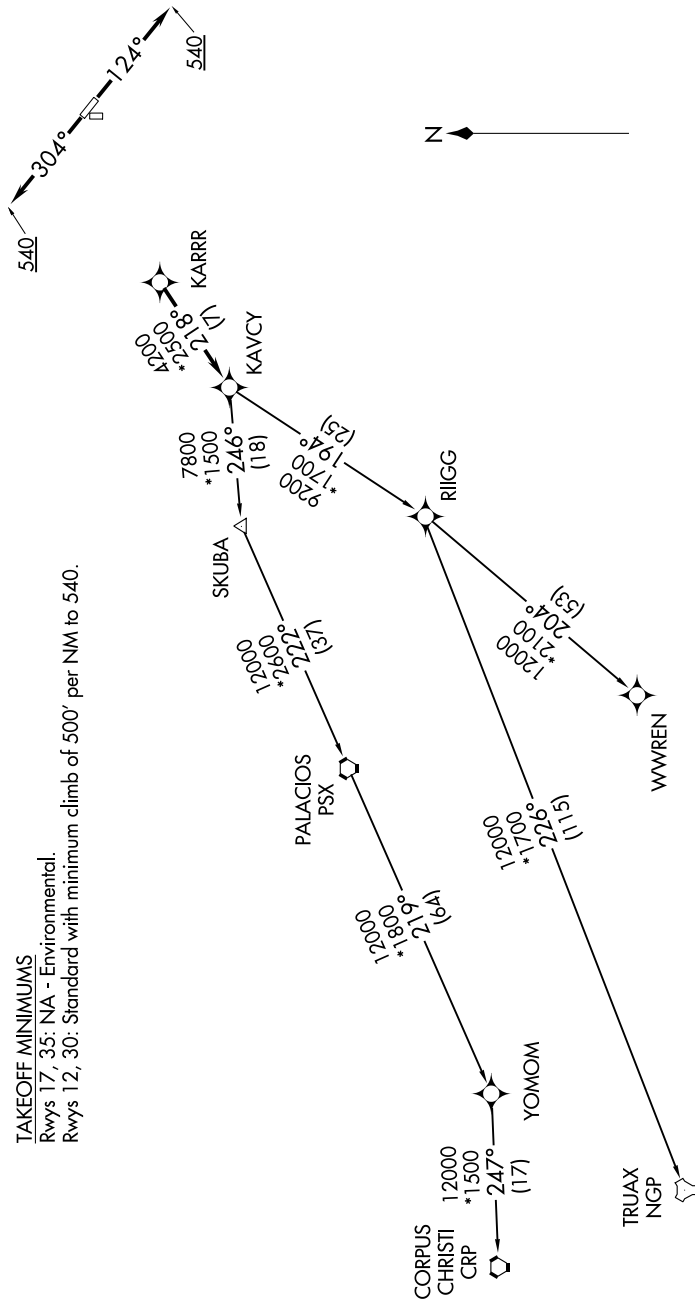
SC-5, 08 AUG 2024 to 05 SEP 2024

RNAV-1 DME/DME/IRU or GPS.  
RADAR required.

CTAF  
122.9  
HOUSTON DEP CON  
134.45 284.0

### TAKEOFF MINIMUMS

Rwys 17, 35: NA - Environmental.  
Rwys 12, 30: Standard with minimum climb of 500' per NM to 540.



(NARRATIVE ON FOLLOWING PAGE)

NOTE: Chart not to scale.

SC-5, 08 AUG 2024 to 05 SEP 2024

# KARR SEVEN DEPARTURE (RNAV)