

APP CRS	Rwy Idg	3005
124°	TDZE	21
	Apt Elev	21

RNAV (GPS) RWY 12

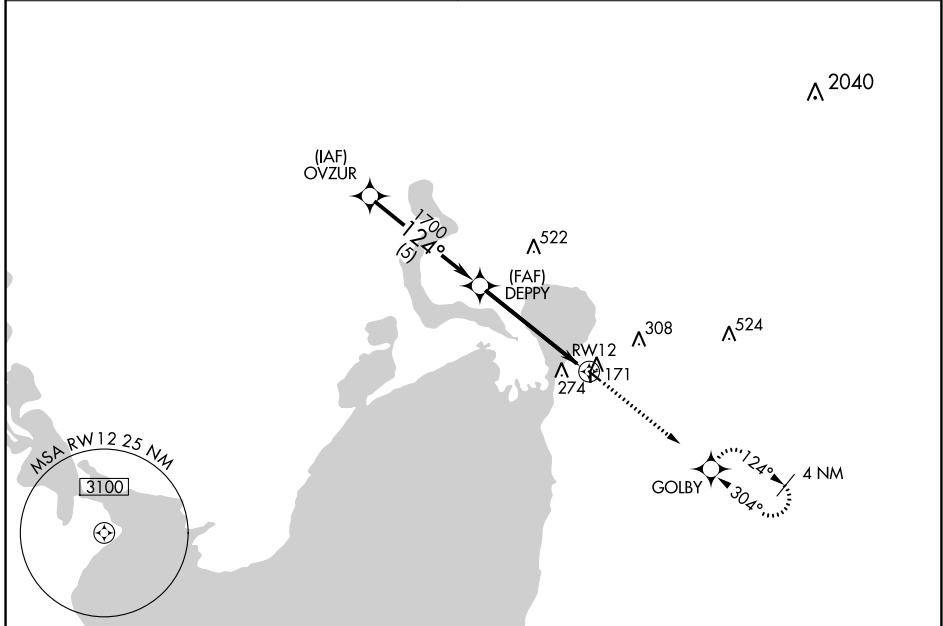
CHAMBERS COUNTY (T00)

▼ RADAR required. Use William P Hobby altimeter setting. GPS or RNP-0.3 required.
▲ NA DME/DME RNP-0.3 NA. Procedure NA at night. Rwy 12 helicopter visibility reduction below 1 SM NA. Circling NA to Rwy 17 and 35.

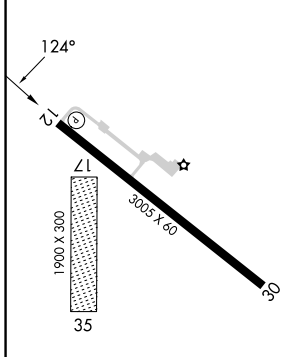
MISSED APPROACH: Climb to 3000 direct GOLBY WP and hold.

HOUSTON APP CON
134.45 284.0

CTAF
122.9 0



ELEV	21	TDZE	21
------	----	------	----



CATEGORY	A	B	C	D
LNAV MDA	560-1	539 (600-1)	560-1½ 539 (600-1½)	NA
CIRCLING	660-1	639 (700-1)	700-2 679 (700-2)	NA

MIRL Rwy 12-30 **0**
 LIRL Rwy 12-30

SC-5, 08 AUG 2024 to 05 SEP 2024

SC-5, 08 AUG 2024 to 05 SEP 2024