

APP CRS **194°**
 Rwy Idg **6001**
 TDZE **3701**
 Apt Elev **3706**

RNAV (GPS) RWY 19
 MOORE COUNTY (DUX)

RNP APCH - GPS.

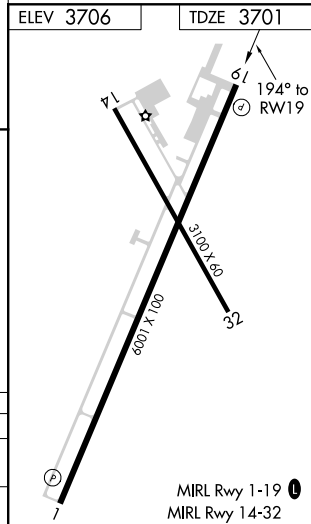
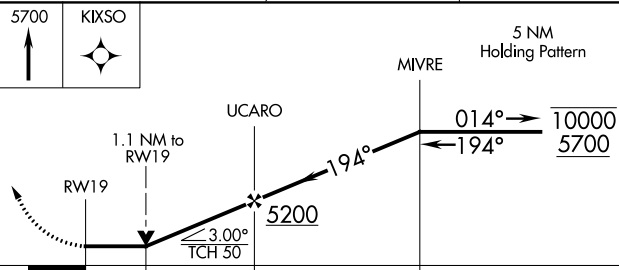
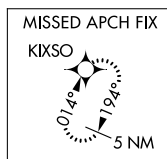
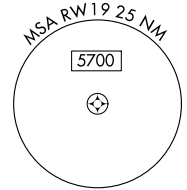
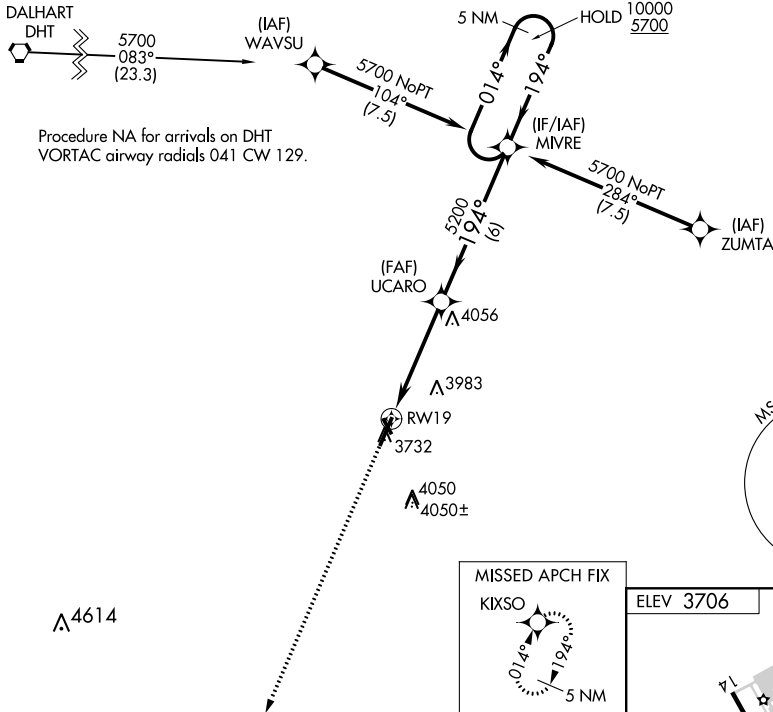
▼ Circling Rwy 14, 32 NA at night.
▲ Rwy 19 helicopter visibility reduction below ¾ SM NA.

MISSED APPROACH: Climb to 5700 direct KIXSO and hold.

AWOS-3
118.075

ALBUQUERQUE CENTER
127.85 285.475

UNICOM
122.8 (CTAF) 0



CATEGORY	A	B	C	D
LNVA MDA	4100-1	399 (400-1)	4100-1½	399 (400-1½)
C CIRCLING	4100-1 394 (400-1)	4300-1 594 (600-1)	4400-2 694 (700-2)	4400-2¼ 694 (700-2¼)

SC-2, 08 AUG 2024 to 05 SEP 2024

SC-2, 08 AUG 2024 to 05 SEP 2024