

APP CRS	Rwy Idg	2589
185°	TDZE	584
	Apt Elev	584

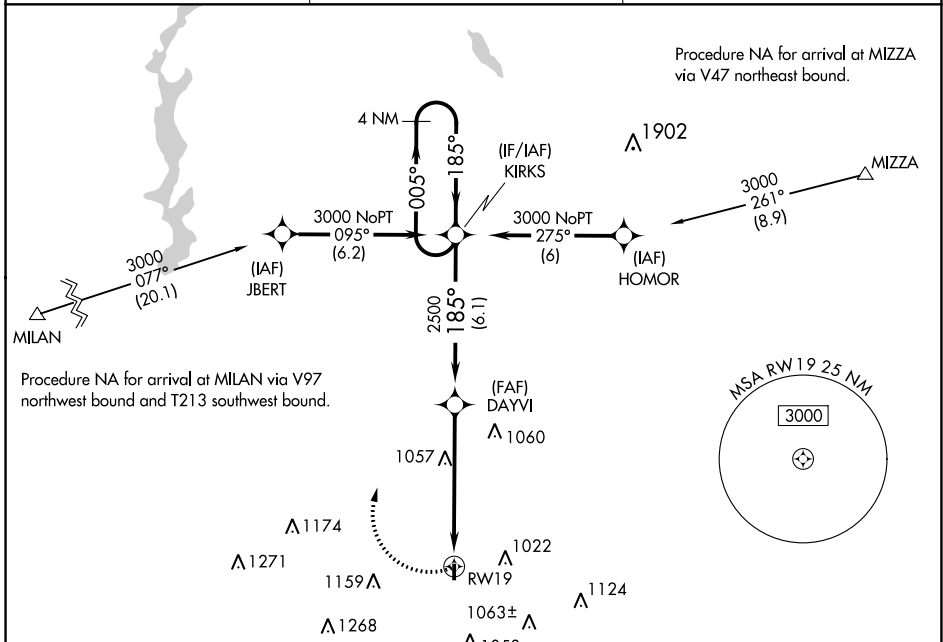
RNAV (GPS) RWY 19

CINCINNATI WEST (I67)

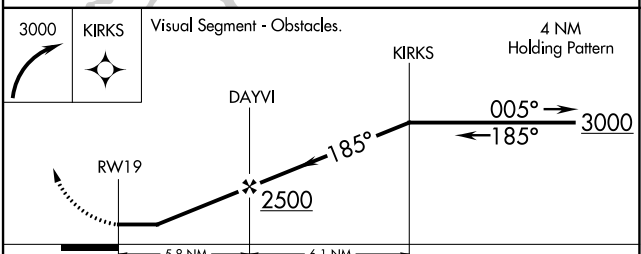
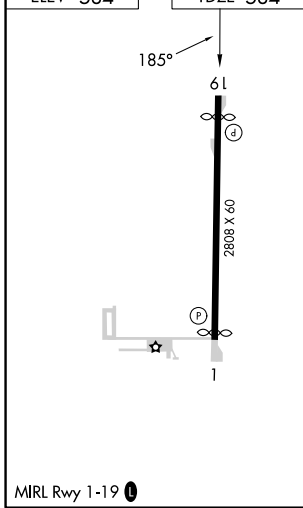
⚠ DME/DME RNP-0.3 NA. Rwy 1, 19 helicopter visibility reduction below 1 SM NA.
⚠ NA Use Butler Co Rgnl-Hogan Field altimeter setting, when not received, use Cincinnati/Northern Kentucky Intl altimeter setting and increase all MDA 40 feet. Procedure NA at night.

MISSED APPROACH:
 Climbing right turn 3000 direct KIRKS and hold.

AWOS-3PT 118.15	CINCINNATI APP CON 128.7 254.25	UNICOM 123.0 (CTAF)
---------------------------	---	-------------------------------



ELEV 584	TDZE 584
----------	----------



CATEGORY	A	B	C	D
LNAV MDA	1380-1 796 (800-1)	1380-1¼ 796 (800-1¼)	NA	
CIRCLING	1380-1 796 (800-1)	1380-1¼ 796 (800-1¼)	NA	

EC-2, 08 AUG 2024 to 05 SEP 2024

EC-2, 08 AUG 2024 to 05 SEP 2024