

WAAS CH <b>78238</b> <b>W17A</b>	APP CRS <b>174°</b>	Rwy Idg <b>4149</b> TDZE <b>1232</b> Apt Elev <b>1232</b>
--	------------------------	---

# RNAV (GPS) RWY 17

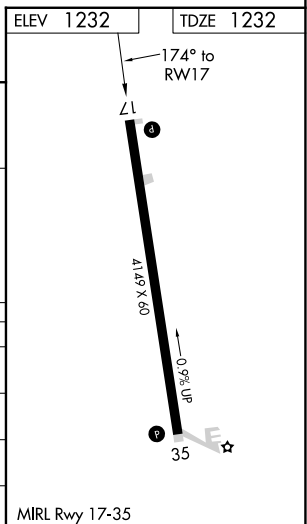
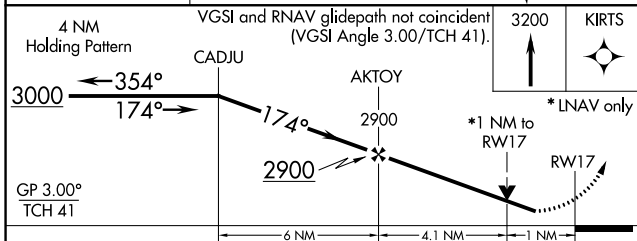
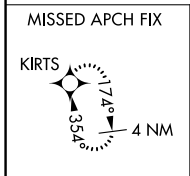
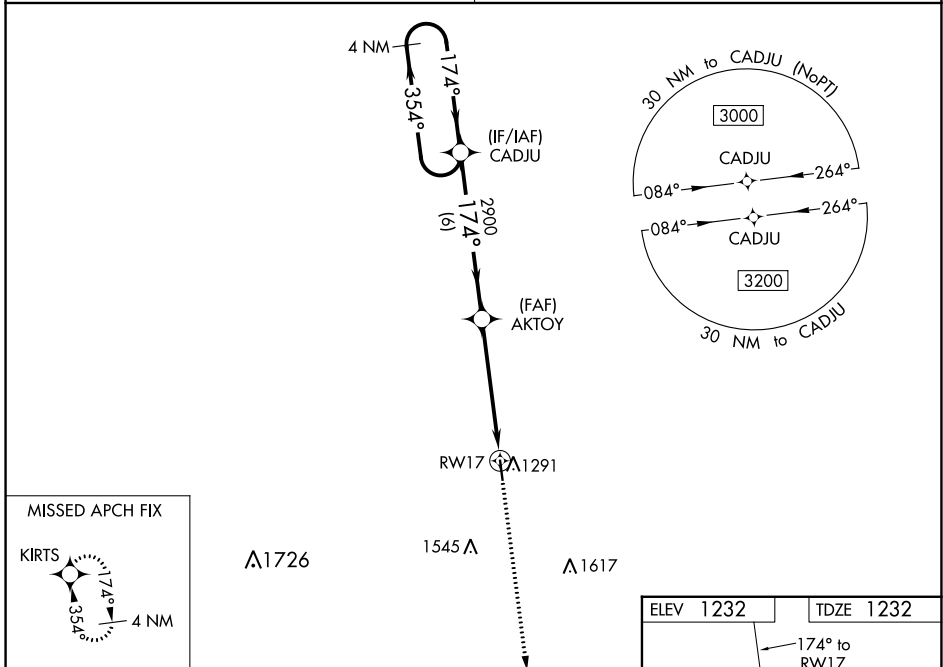
GEORGE L SCOTT MUNI (3Y2)

**RNP APCH.**

**NA** For uncompensated Baro-VNAV systems, LNAV/VNAV NA below -17°C (2°F) or above 54°C (130°F). Baro-VNAV and VDP NA when using Decarah altimeter setting. Helicopter visibility reduction below ¾ SM NA. Obtain local altimeter setting on CTAF; when not received, use Decarah altimeter setting and increase LPV and LNAV/VNAV DA to 1533 all Cats, increase all MDA 60 feet, and LNAV Cat C visibility ½ mile.

**MISSED APPROACH:** Climb to 3200 direct KIRTS and hold.

MINNEAPOLIS CENTER <b>118.85</b>	UNICOM <b>122.8 (CTAF)</b>
-------------------------------------	-------------------------------



CATEGORY	A	B	C	D
LPV DA	1482-1	250 (300-1)		NA
LNAV/VNAV DA	1482-1	250 (300-1)		NA
LNAV MDA	1580-1	348 (400-1)		NA
<b>C</b> CIRCLING	1740-1	508 (600-1)	1860-1¾ 628 (700-1¾)	NA

MIRL Rwy 17-35

NC-3, 08 AUG 2024 to 05 SEP 2024

NC-3, 08 AUG 2024 to 05 SEP 2024