

WAAS CH 50416 W02A	APP CRS 020°	Rwy Idg 6100 TDZE 3786 Apt Elev 3788
--	------------------------	---

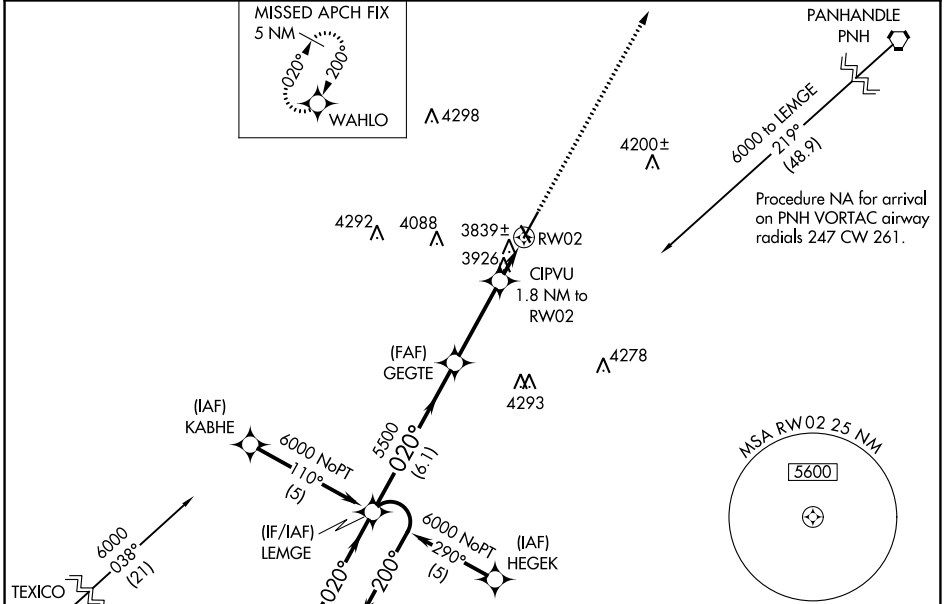
RNAV (GPS) RWY 2

HEREFORD MUNI (HR.X)

▼ For uncompensated Baro-VNAV systems, LNAV/VNAV NA below -22°C (-7°F) or above 41°C (105°F).
 ▲ DME/DME RNP-0.3 NA. When local altimeter setting not received, use Rick Husband Amarillo Intl altimeter setting: Increase LPV DA to 4098 feet and all Cats visibility ¼ SM, increase LNAV/VNAV DA to 4238 feet and all Cats visibility ¼ SM, increase all MDA 120 feet; increase LNAV Cats C/D visibility ¼ SM, increase Circling Cat C visibility ½ SM and Cat D visibility ¼ SM. Baro-VNAV NA when using Rick Husband Amarillo Intl altimeter setting. VDP NA with Rick Husband Amarillo Intl altimeter setting.

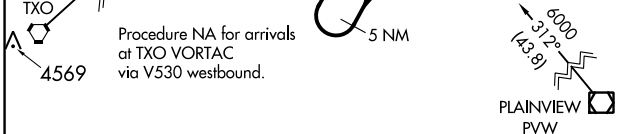
MISSED APPROACH:
Climb to 6000 direct WAHLO and hold.

AWOS-3 118.05	AMARILLO APP CON ★ 119.5 307.0	UNICOM 122.8 (CTAF) 0
-------------------------	--	---------------------------------

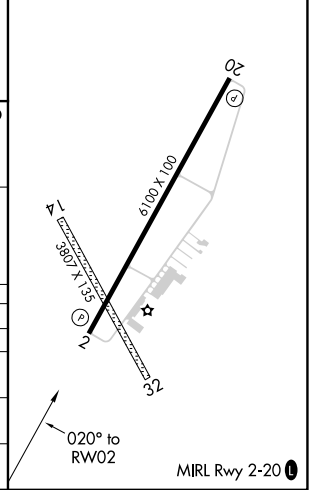


SC-2, 08 AUG 2024 to 05 SEP 2024

SC-2, 08 AUG 2024 to 05 SEP 2024



ELEV 3788	TDZE 3786
-----------	-----------



5 NM Holding Pattern	LEMGE	GEGTE	CIPVU	WAHLO
6000	5500	4400	6000	6000
GP 3.00° TCH 52	5500	*4400	*1.3 NM to RW02	*LNAV only.
	6.1 NM	3.3 NM	0.5 NM	1.3 NM

CATEGORY	A	B	C	D
LPV DA		3986-¾	200 (200-¾)	
LNAV/DA VNAV		4126-1¼	340 (400-1¼)	
LNAV MDA	4240-1	454 (500-1)	4240-1¼ 454 (500-1¼)	4240-1½ 454 (500-1½)
CIRCLING	4280-1	492 (500-1)	4440-1¾ 652 (700-1¾)	4620-2¾ 832 (900-2¾)