

WAAS CH <b>61216</b> <b>W20A</b>	APP CRS <b>200°</b>	Rwy Idg <b>6100</b> TDZE <b>3786</b> Apt Elev <b>3788</b>
--	------------------------	---

# RNAV (GPS) RWY 20

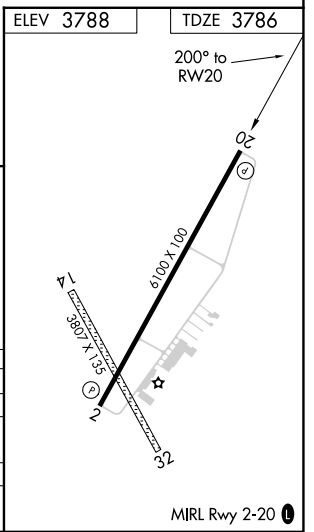
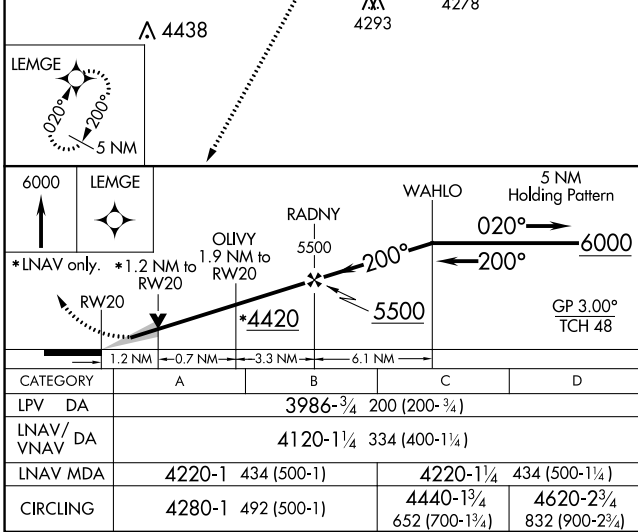
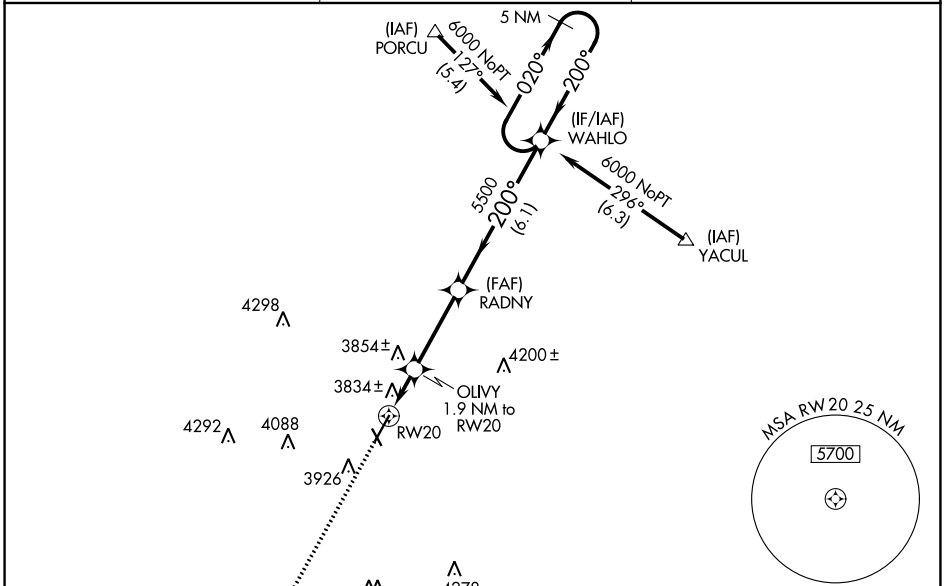
HEREFORD MUNI (HR.X)

RNP APCH.

⚠ For uncompensated Baro-VNAV systems, LNAV/VNAV NA below -22°C (-7°F) or above 41°C (105°F).  
 ⚠ When local altimeter setting not received, use Rick Husband Amarillo Intl altimeter setting: Increase LPV DA to 4098 feet and all Cats visibility ¼ SM, increase LNAV/VNAV DA to 4232 feet and all Cats visibility ¼ SM, increase all MDA 120 feet; increase LNAV Cats C/D visibility ½ SM, increase Circling Cat C visibility ½ SM and Cat D visibility ¼ SM. Baro-VNAV NA when using Rick Husband Amarillo Intl altimeter setting. VDP NA with Rick Husband Amarillo Intl altimeter setting.

MISSED APPROACH:  
Climb to 6000 direct LEMGE and hold.

AWOS-3 <b>118.05</b>	AMARILLO APP CON ★ <b>119.5 307.0</b>	UNICOM <b>122.8 (CTAF) ①</b>
-------------------------	--	---------------------------------



SC-2, 08 AUG 2024 to 05 SEP 2024

SC-2, 08 AUG 2024 to 05 SEP 2024