

| | | | |
|--|------------------------|-----------------------------|-------------------------------------|
| WAAS CH 53316 W35A | APP CRS 351° | Rwy Idg TDZE Apt Elev | 5000 5 5 |
|--|------------------------|-----------------------------|-------------------------------------|

RNAV (GPS) RWY 35

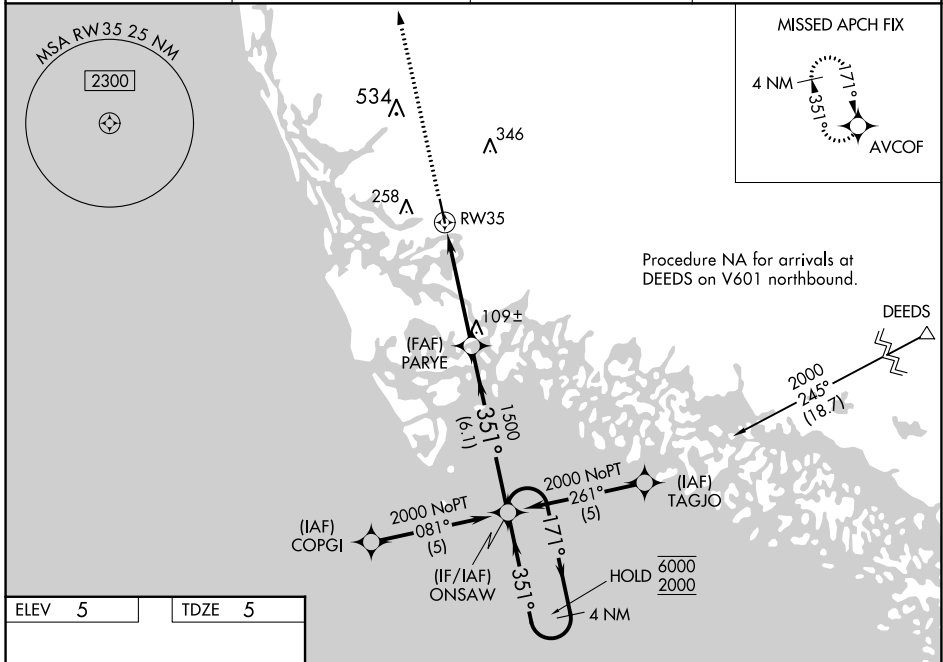
MARCO ISLAND EXEC (MKY)

PBN APCH.

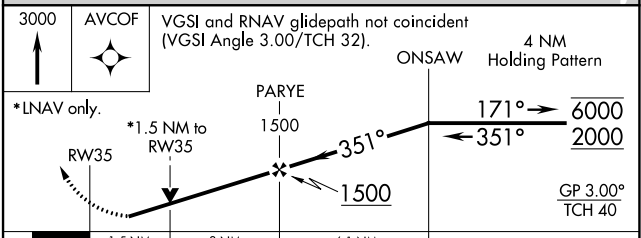
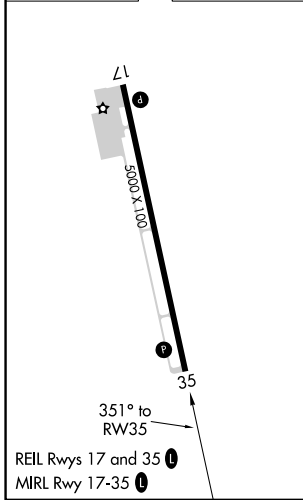
▼ Baro-VNAV and VDP NA when using Naples altimeter setting. Rwy 35 helicopter visibility reduction below 3/4 SM NA. When local altimeter setting not received, use Naples altimeter setting and increase LPV DA to 312 feet; increase LNAV/VNAV DA to 420 feet; increase all MDAs 40 feet and visibility Cat C 1/4 SM. For uncompensated Baro-VNAV systems, LNAV/VNAV NA below 2°C or above 54°C.

▲ MISSED APPROACH: Climb to 3000 direct AVCOF and hold, continue climb-in-hold to 3000.

| | | | |
|----------------------------|---|--------------------------|--|
| AWOS-3PT 120.075 | FORT MYERS APP CON * 124.125 371.85 | CLNC DEL 120.8 | UNICOM 122.7 (CTAF) 0 |
|----------------------------|---|--------------------------|--|



| | |
|--------|--------|
| ELEV 5 | TDZE 5 |
|--------|--------|



| CATEGORY | A | B | C | D |
|--------------|---------------------|---------------------|---------------------|---------------------|
| LPV DA | 286-1 281 (300-1) | | | |
| LNAV/VNAV DA | 394-1½ 389 (400-1½) | | | |
| LNAV MDA | 520-1 515 (600-1) | 520-1½ 515 (600-1½) | 520-1¾ 515 (600-1¾) | 520-1¾ 515 (600-1¾) |
| CIRCLING | 620-1 615 (700-1) | 660-1¾ 655 (700-1¾) | 840-2¾ 835 (900-2¾) | 840-2¾ 835 (900-2¾) |

SE-3, 08 AUG 2024 to 05 SEP 2024

SE-3, 08 AUG 2024 to 05 SEP 2024