

APP CRS 059°	Rwy Idg 3300
	TDZE 688
	Apt Elev 688

RNAV (GPS) RWY 6

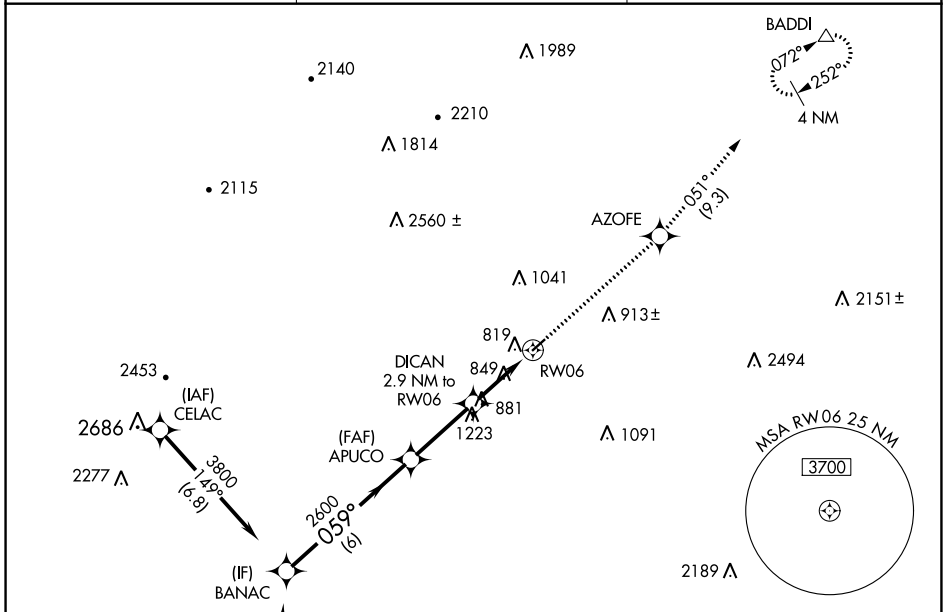
FRANKLIN COUNTY RGNL (N68)

RNP APCH - GPS.

▼ Circling to Rwy 24 NA at night. VDP NA when using Hagerstown, MD altimeter setting.
▲ NA When local altimeter setting not received, use Hagerstown, MD altimeter setting and increase all MDAs 40 feet, increase LNAV Cat C visibility ¼ SM.

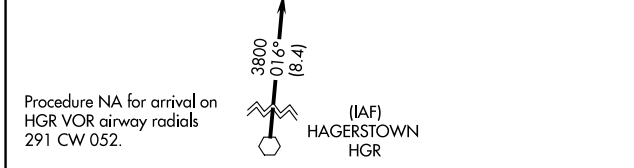
MISSED APPROACH: Climb to 4000 direct AZOFE and on track 051° to BADDI and hold, continue climb-in-hold to 4000.

AWOS-3 120.725	HARRISBURG APP CON 124.1 273.525	CTAF 122.9 0
--------------------------	--	------------------------



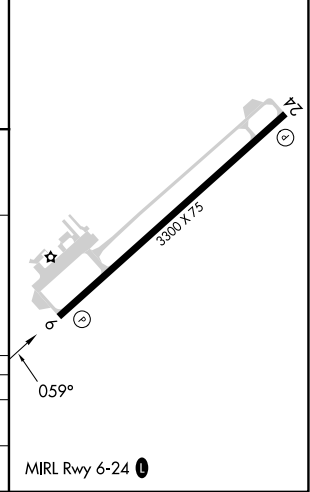
NE-4, 08 AUG 2024 to 05 SEP 2024

NE-4, 08 AUG 2024 to 05 SEP 2024



ELEV 688	TDZE 688
----------	----------

BANAC	APUCO	DICAN 2.9 NM to RW06	AZOFE 1.2 NM to RW06	BADDI
3800	2600	1640		
059°		tr 051°		
6 NM		3 NM		1.7 NM
				1.2 NM



CATEGORY	A	B	C	D
LNAV MDA	1100-1	412 (500-1)	1100-1½ 412 (500-1½)	NA
CIRCLING	1220-1	532 (600-1)	1360-2 672 (700-2)	NA