

SWABR ONE DEPARTURE (RNAV)

SC-2, 08 AUG 2024 to 05 SEP 2024

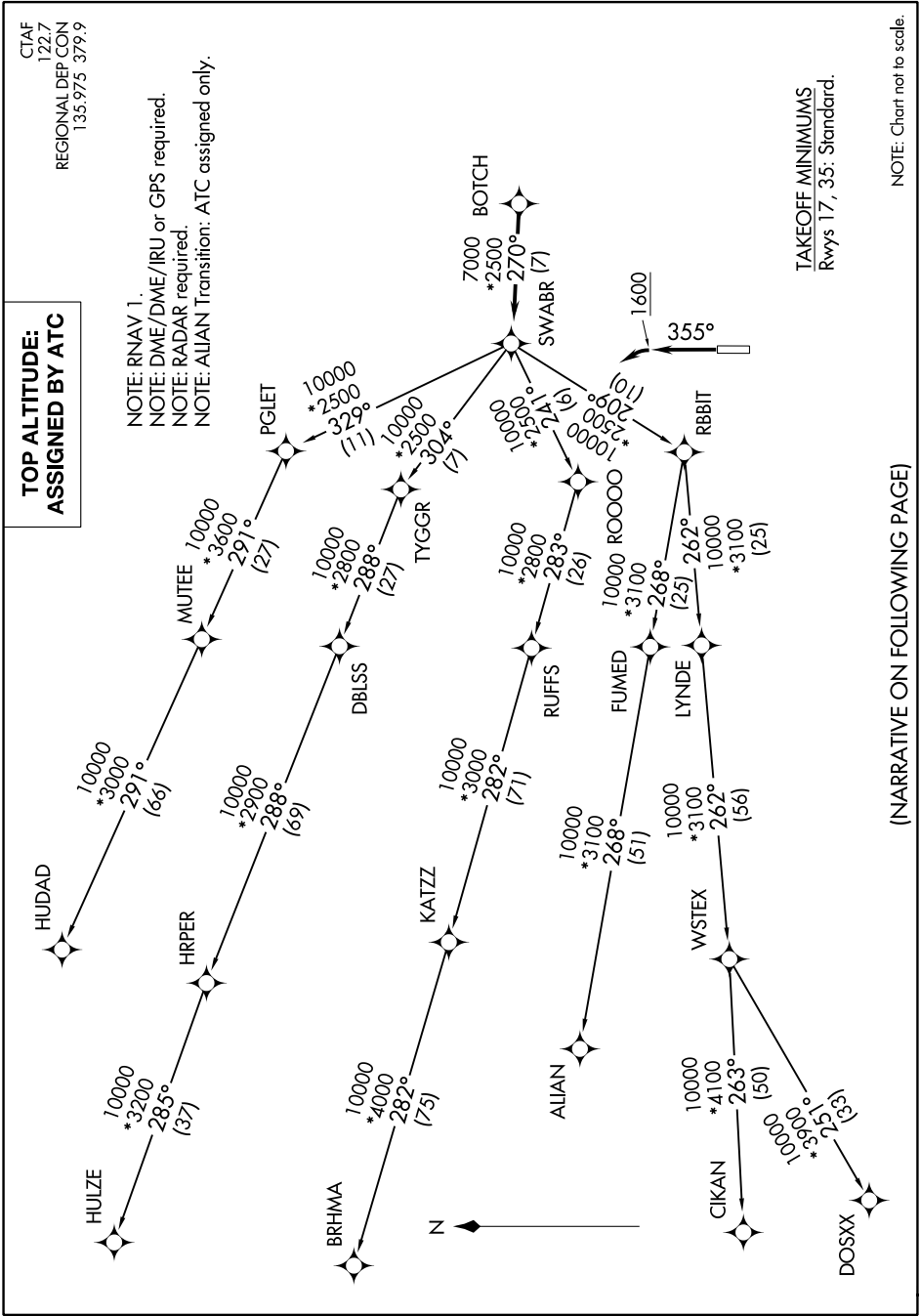
CTAF
122.7
REGIONAL DEP CON
135.975 379.9

TOP ALTITUDE: ASSIGNED BY ATC

NOTE: RNAV 1.
NOTE: DME/DME/IRU or GPS required.
NOTE: RADAR required.
NOTE: ALIANT Transition: ATC assigned only.

TAKEOFF MINIMUMS
Rwy 17, 35: Standard.

NOTE: Chart not to scale.



SWABR ONE DEPARTURE (RNAV)

(NARRATIVE ON FOLLOWING PAGE)

SC-2, 08 AUG 2024 to 05 SEP 2024