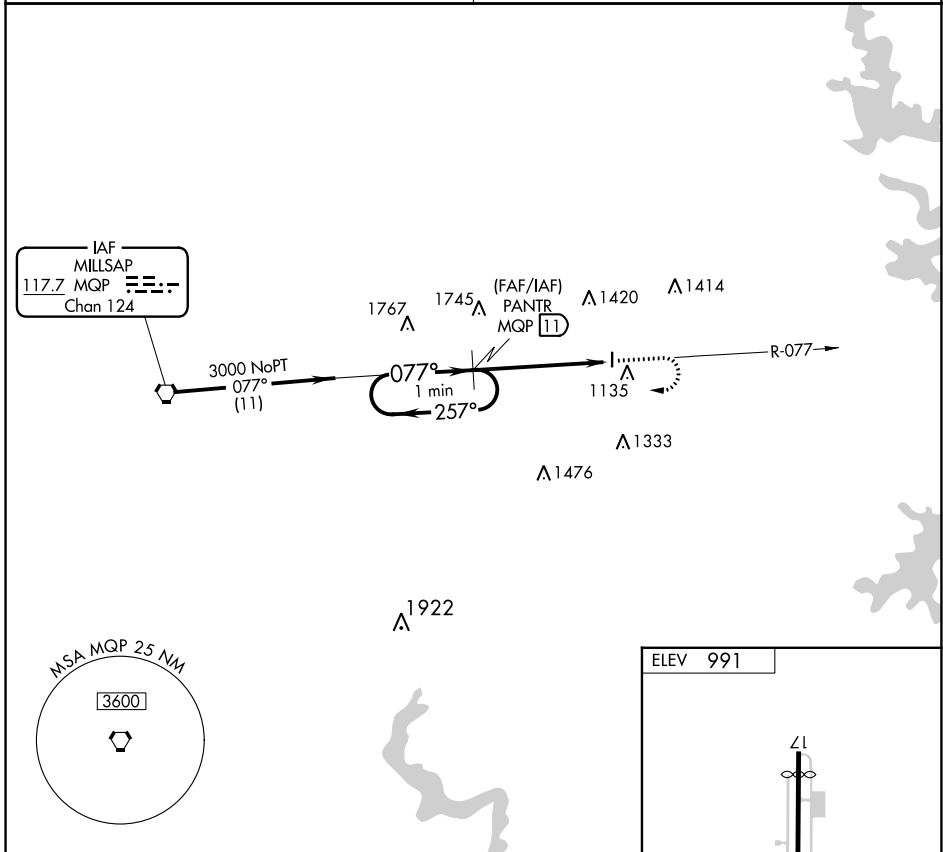


| | | | |
|---|------------------------|-----------------------------|--|
| VORTAC MQP 117.7 Chan 124 | APP CRS 077° | Rwy Idg TDZE Apt Elev | N/A N/A 991 |
|---|------------------------|-----------------------------|--|

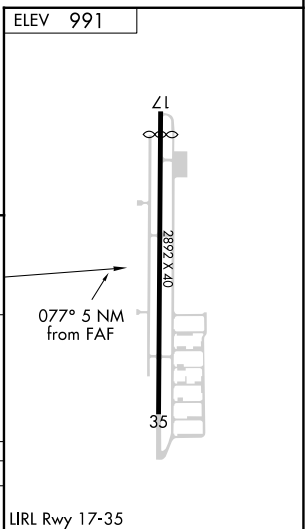
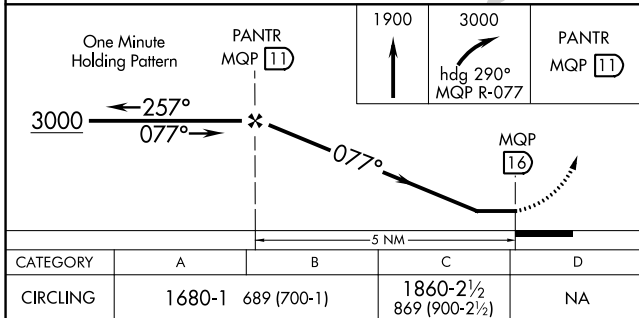
VOR/DME-A
PARKER COUNTY (WEA)

| | |
|---|---|
| ▽ ▲ NA Use Fort Worth Meacham altimeter setting. | MISSED APPROACH: Climb to 1900 then climbing right turn to 3000 via heading 290° and MQP R-077 to PANTR and hold. |
| REGIONAL APP CON 135.975 379.9 | UNICOM 122.7 (CTAF) |



SC-2, 08 AUG 2024 to 05 SEP 2024

SC-2, 08 AUG 2024 to 05 SEP 2024



| CATEGORY | A | B | C | D |
|----------|--------|-------------|-------------------------|----|
| CIRCLING | 1680-1 | 689 (700-1) | 1860-2½ 869 (900-2½) | NA |

LIRL Rwy 17-35