

# COPTER RNAV (GPS) X RWY 31

GRANT COUNTY (W99)

APP CRS <b>310°</b>	Rwy Idg <b>5000</b>
	TDZE <b>957</b>
	Apt Elev <b>963</b>

RNP APCH.

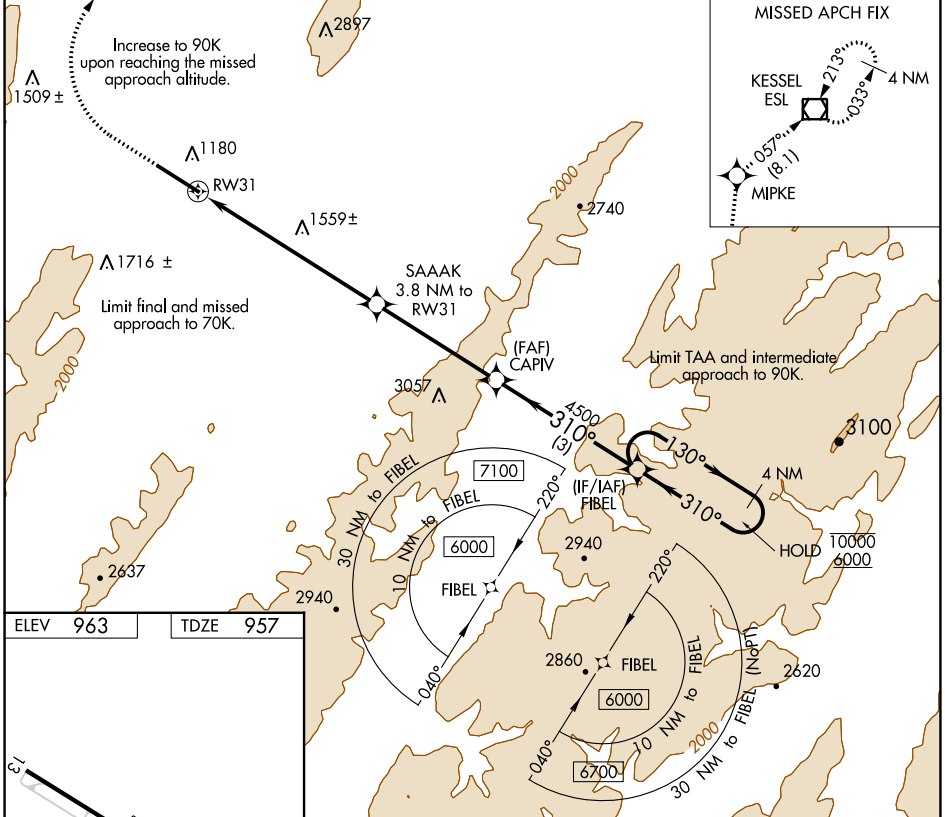
**NA** When local altimeter setting not received, procedure NA.  
**-8°C**

MISSED APPROACH: Climb to 1380 then climbing right turn to 5000 direct MIPKE and on track 057° to ESL VOR/DME and hold.

AWOS-3  
**124.475**

WASHINGTON CENTER  
**133.55 322.55**

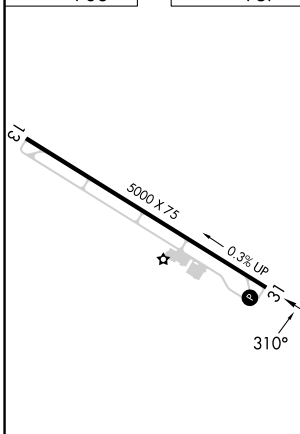
UNICOM  
**122.8 (CTAF)**



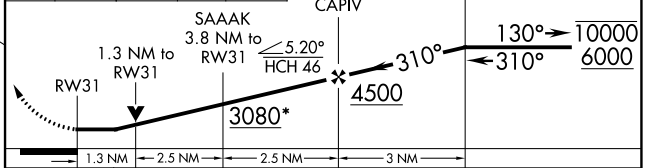
NE-4, 08 AUG 2024 to 05 SEP 2024

NE-4, 08 AUG 2024 to 05 SEP 2024

ELEV 963	TDZE 957
----------	----------



1380	5000	MIPKE	tr 057°	ESL	VGSI and descent angles not coincident (VGSI Angle 6.50/TCH 46).
					FIBEL Holding Pattern 4 NM



REIL Rws 13 and 31	MIRL Rwy 13-31
CATEGORY	COPTER
LNAV MDA	1880- <sup>3</sup> / <sub>4</sub> 923 (1000- <sup>3</sup> / <sub>4</sub> )

# COPTER RNAV (GPS) X RWY 31