

APP CRS	Rwy Idg	N/A
145°	TDZE	N/A
	Apt Elev	963

RNAV (GPS)-C

GRANT COUNTY (W99)

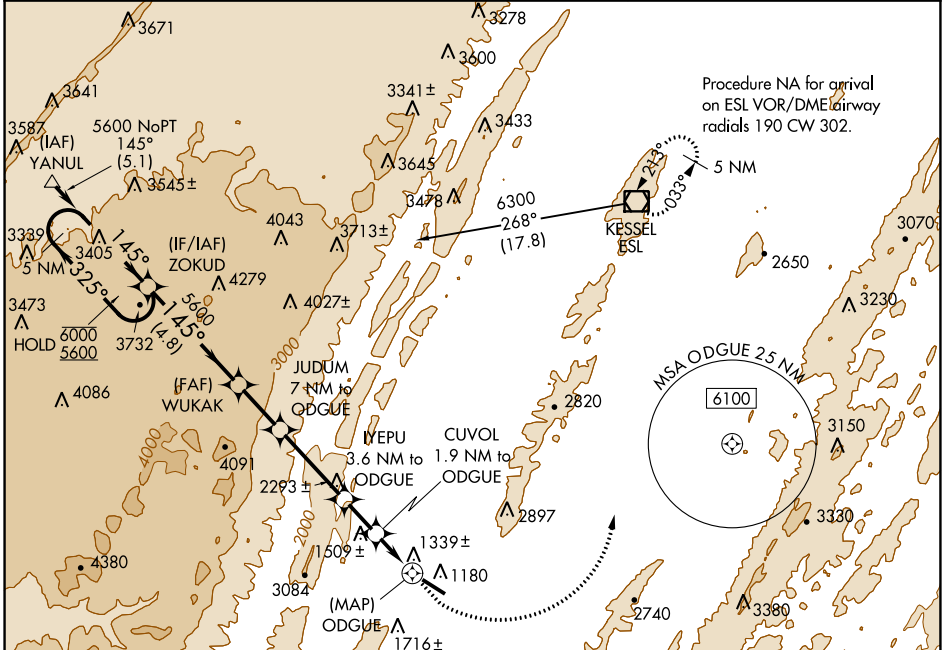
RNP APCH - GPS

⚠ When local altimeter setting not received, procedure NA.

❄ -8°C

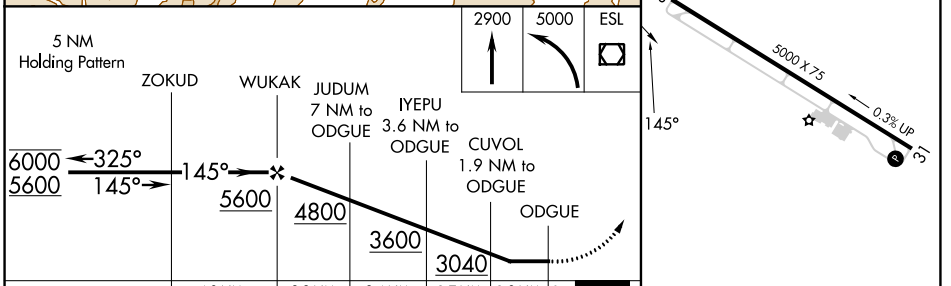
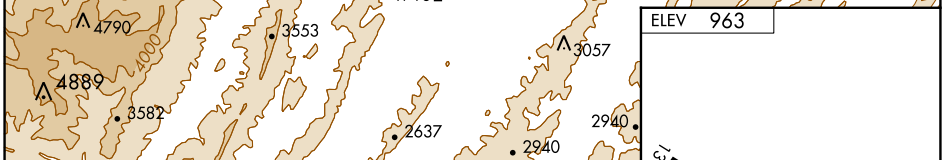
MISSED APPROACH: Climb to 2900 then climbing left turn to 5000 direct ESL VOR/DME and hold.

AWOS-3 124.475	WASHINGTON CENTER 133.55 322.55	UNICOM 122.8 (CTAF)
--------------------------	---	-------------------------------



NE-4, 08 AUG 2024 to 05 SEP 2024

NE-4, 08 AUG 2024 to 05 SEP 2024



CATEGORY	A	B	C	D
CIRCLING	2400-1¼ 1437 (1500-1¼)	2400-1½ 1437 (1500-1½)	NA	NA

MIRL Rwy 13-31

REIL Rws 13 and 31