

WAAS CH <b>69437</b> <b>W13A</b>	APP CRS <b>135°</b>	Rwy Idg TDZE Apt Elev	<b>5400</b> <b>1076</b> <b>1076</b>
--	------------------------	-----------------------------	---

# RNAV (GPS) RWY 13

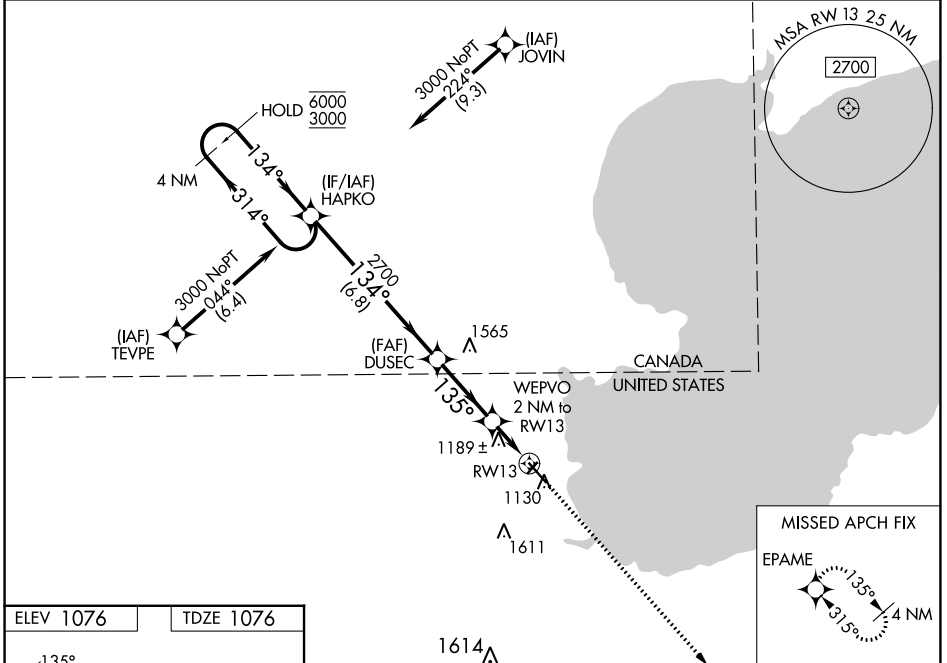
WARROAD INTL MEML (R.R.T)

RNP APCH.

**MALSR**

**MISSED APPROACH:**  
Climb to 3000 direct EPAME and hold.

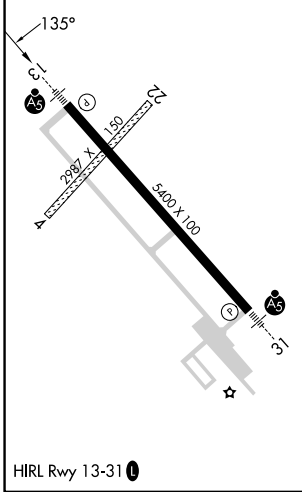
AWOS-3 <b>119.925</b>	MINNEAPOLIS CENTER <b>134.75 251.1</b>	GCO <b>121.725</b>	UNICOM <b>123.05 (CTAF)</b>
--------------------------	---	-----------------------	--------------------------------



NC-1, 08 AUG 2024 to 05 SEP 2024

NC-1, 08 AUG 2024 to 05 SEP 2024

ELEV 1076	TDZE 1076
-----------	-----------



4 NM Holding Pattern

VGSI and RNAV glidepath not coincident (VGSI Angle 3.00/TCH 29).

HAPKO DUSEC WEPVO 2 NM to RWY 13

6000 ← 314° → 3000 134° → 134° → 2700 → 135° → \*1740 → \*1.1 NM to RWY 13 → RWY 13

GP 3.00° TCH 45

6.8 NM 3 NM 0.9 NM 1.1

CATEGORY	A	B	C	D
LPV DA		1276- <sup>3</sup> / <sub>4</sub>	200 (200- <sup>3</sup> / <sub>4</sub> )	
LNAV/VNAV DA		1365-1	289 (300-1)	
LNAV MDA		1440-1	364 (400-1)	
<b>C</b> CIRCLING	1500-1 424 (500-1)	1540-1 464 (500-1)	1960-2 <sup>3</sup> / <sub>4</sub> 884 (900-2 <sup>3</sup> / <sub>4</sub> )	1960-3 884 (900-3)

3000 EPAME

\*LNAV only