

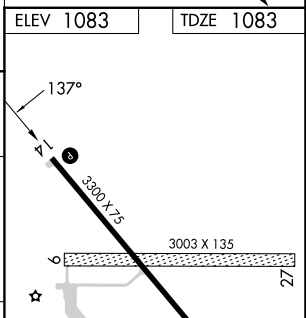
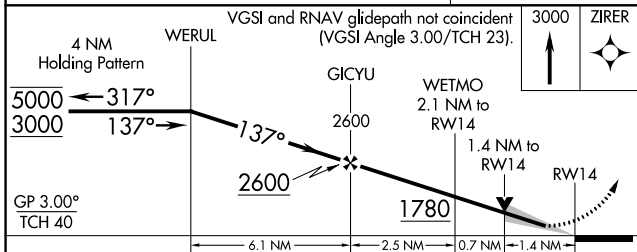
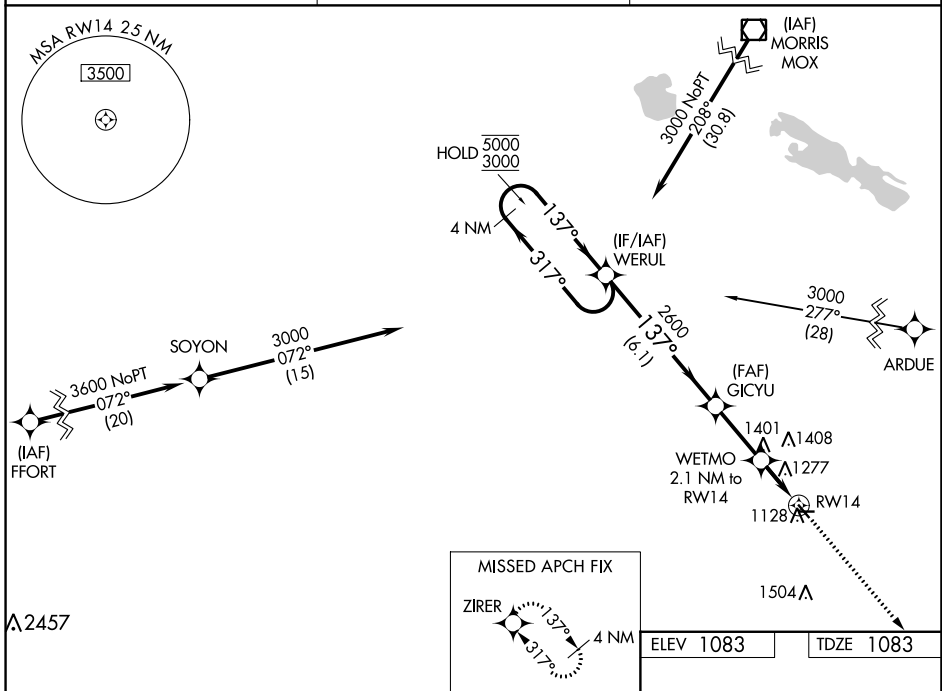
WAAS CH <b>63030</b> <b>W14A</b>	APP CRS <b>137°</b>	Rwy Idg TDZE Apt Elev	<b>3300</b> <b>1083</b> <b>1083</b>
--	------------------------	-----------------------------	---

# RNAV (GPS) RWY 14

LAC QUI PARLE COUNTY (DXX)

RNP APCH - GPS.	MISSED APPROACH: Climb to 3000 direct ZIRER and hold.
<p>Circling NA to Rwys 9 and 27. For uncompensated Baro-VNAV systems, LNAV/VNAV NA below -17°C or above 54°C.</p>	

AWOS-3 <b>118.975</b>	MINNEAPOLIS CENTER <b>128.5 306.2</b>	UNICOM <b>122.8 (CTAF) 0</b>
--------------------------	--	---------------------------------



CATEGORY	A	B	C	D
LPV DA	1283-1 200 (200-1)			NA
LNAV/VNAV DA	1572-1 <sup>3</sup> / <sub>8</sub> 489 (500-1 <sup>3</sup> / <sub>8</sub> )			NA
LNAV MDA	1540-1	457 (500-1)	1540-1 <sup>3</sup> / <sub>8</sub> 457 (500-1 <sup>3</sup> / <sub>8</sub> )	NA
CIRCLING	1640-1	557 (600-1)	1820-2 737 (800-2)	NA

ELEV 1083	TDZE 1083
REIL Rwys 14 and 32 0	
MIRL Rwy 14-32 0	

NC-1, 08 AUG 2024 to 05 SEP 2024

NC-1, 08 AUG 2024 to 05 SEP 2024