

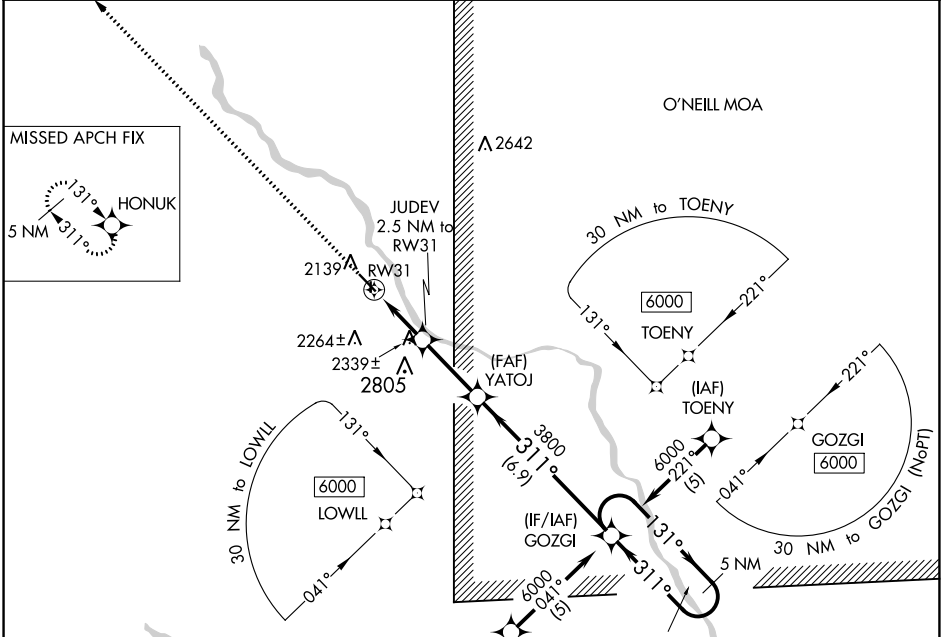
WAAS CH <b>99412</b> <b>W31A</b>	APP CRS <b>311°</b>	Rwy Idg TDZE Apt Elev	<b>4501</b> <b>2064</b> <b>2070</b>
--	------------------------	-----------------------------	---

# RNAV (GPS) RWY 31

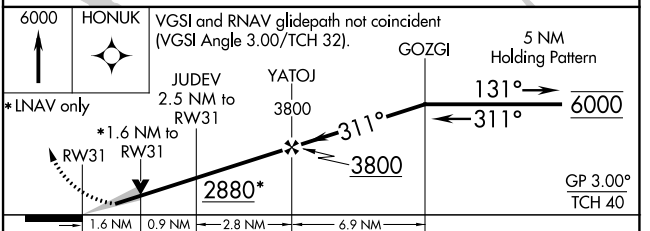
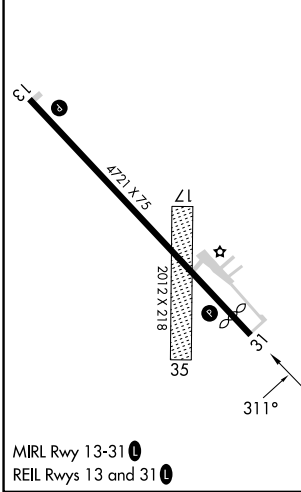
EVELYN SHARP FLD (ODX)

RNP APCH.	MISSED APPROACH: Climb to 6000 direct HONUK and hold, continue climb-in-hold to 6000.
<b>▽</b> Circling NA to Rwy 17 and 35. For uncompensated Baro-VNAV systems, LNAV/VNAV NA below -24°C or above 54°C.	

ASOS <b>119.925</b>	MINNEAPOLIS CENTER <b>119.4 278.8</b>	UNICOM <b>122.8 (CTAF) 0</b>
------------------------	--	---------------------------------



ELEV 2070	TDZE 2064
-----------	-----------



CATEGORY	A	B	C	D
LPV DA	2314-1	250 (300-1)		NA
LNAV/VNAV DA	2616-1 $\frac{5}{8}$	552 (600-1 $\frac{5}{8}$ )		NA
LNAV MDA	2600-1	536 (600-1)		NA
<b>C</b> CIRCLING	2680-1	610 (700-1)		NA

NC-2, 08 AUG 2024 to 05 SEP 2024

NC-2, 08 AUG 2024 to 05 SEP 2024