

WAAS CH 70434 W33A	APP CRS 334°	Rwy Idg TDZE Apt Elev	4200 1379 1379
--	------------------------	-----------------------------	---

RNAV (GPS) RWY 33

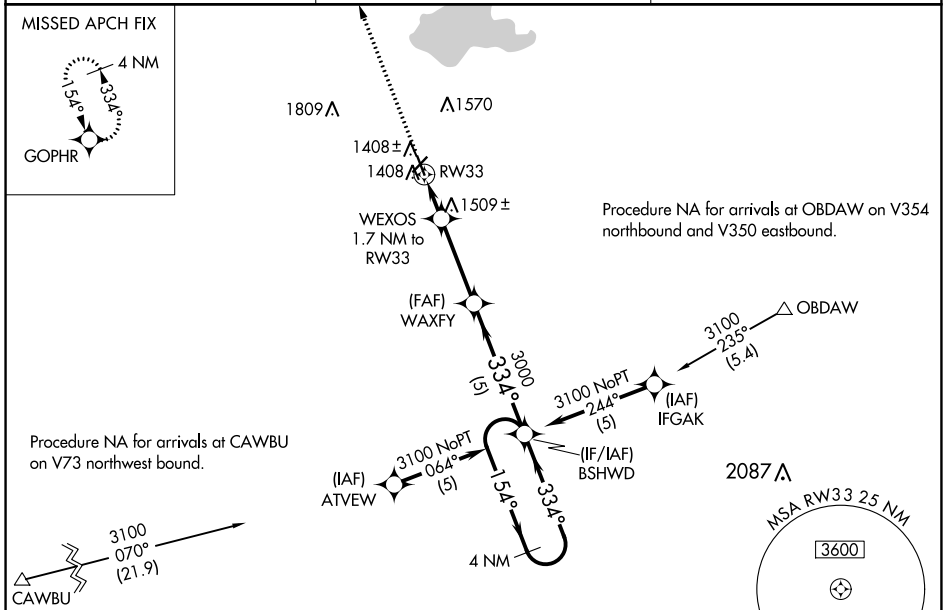
EL DORADO/CAPT JACK THOMAS MEML (EQA)

RNP APCH-GPS.

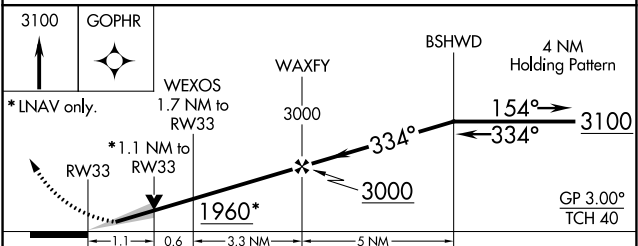
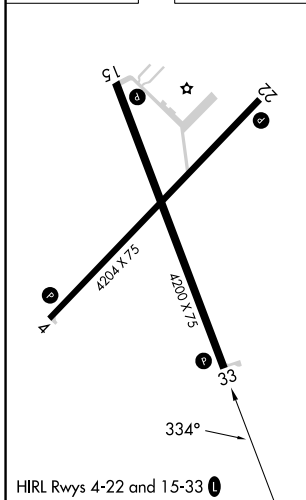
NA For uncompensated Baro-VNAV systems, LNAV/VNAV NA below -17°C or above 54°C. When local altimeter setting not received, use Colonel James Jabara altimeter setting and increase all DA 51 feet and all MDA 60 feet. Baro-VNAV and VDP NA when using Colonel James Jabara altimeter setting.

MISSED APPROACH: Climb to 3100 direct GOPHR and hold.

AWOS-3P 120.875	WICHITA APP CON 134.8 269.1	UNICOM 122.8 (CTAF)
---------------------------	---------------------------------------	-------------------------------



ELEV 1379	TDZE 1379
-----------	-----------



CATEGORY	A	B	C	D
LPV DA	1579-1	200 (200-1)		NA
LNAV/VNAV DA	1629-1	250 (300-1)		NA
LNAV MDA	1760-1	381 (400-1)		NA
CIRCLING	1820-1 441 (500-1)	1960-1 581 (600-1)		NA

NC-2, 08 AUG 2024 to 05 SEP 2024

NC-2, 08 AUG 2024 to 05 SEP 2024