

(STYCK8.STYCK) 21280

AL-6674 (FAA)

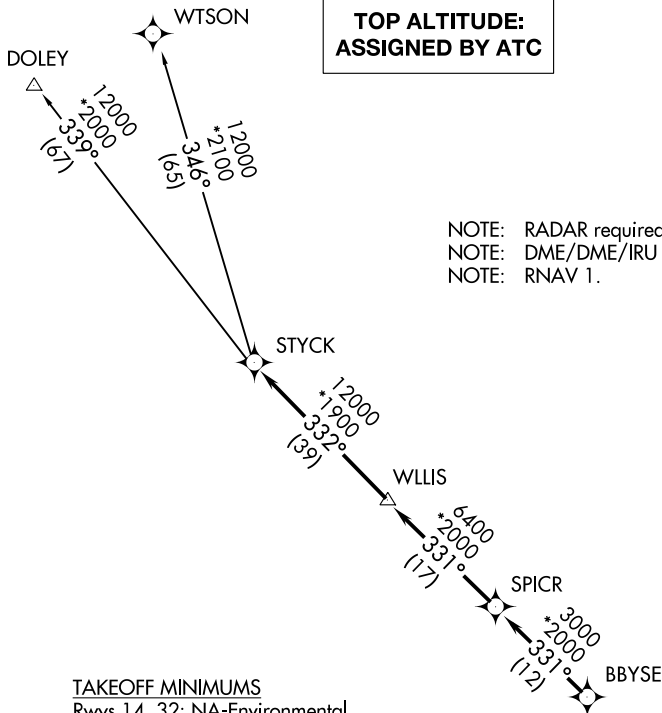
RWJ AIRPARK (54T)

STYCK EIGHT DEPARTURE (RNAV)

BAYTOWN, TEXAS

**TOP ALTITUDE:
ASSIGNED BY ATC**

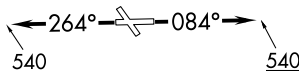
CTAF
122.7
HOUSTON DEP CON
134.45 284.0



NOTE: RADAR required.
NOTE: DME/DME/IRU or GPS required.
NOTE: RNAV 1.

TAKEOFF MINIMUMS

Rwys 14, 32: NA-Environmental.
Rwys 8, 26: Standard with minimum
climb of 500' per NM to 540.



DEPARTURE ROUTE DESCRIPTION

TAKEOFF RUNWAY 8: Climb on heading 084° to 540 for RADAR vectors to BBYSE, thence. . .
TAKEOFF RUNWAY 26: Climb on heading 264° to 540 for RADAR vectors to BBYSE, thence. . .

. . .on track 331° to SPICR, then on track 331° to WLLIS, then on track 332° to STYCK, then on (transition). Maintain ATC assigned altitude. Expect filed altitude 10 minutes after departure.

DOLEY TRANSITION (STYCK8.DOLEY)
WTSON TRANSITION (STYCK8.WTSON)

NOTE: Chart not to scale.

STYCK EIGHT DEPARTURE (RNAV)

(STYCK8.STYCK) 07OCT21

BAYTOWN, TEXAS

RWJ AIRPARK (54T)

SC-5, 08 AUG 2024 to 05 SEP 2024

SC-5, 08 AUG 2024 to 05 SEP 2024