

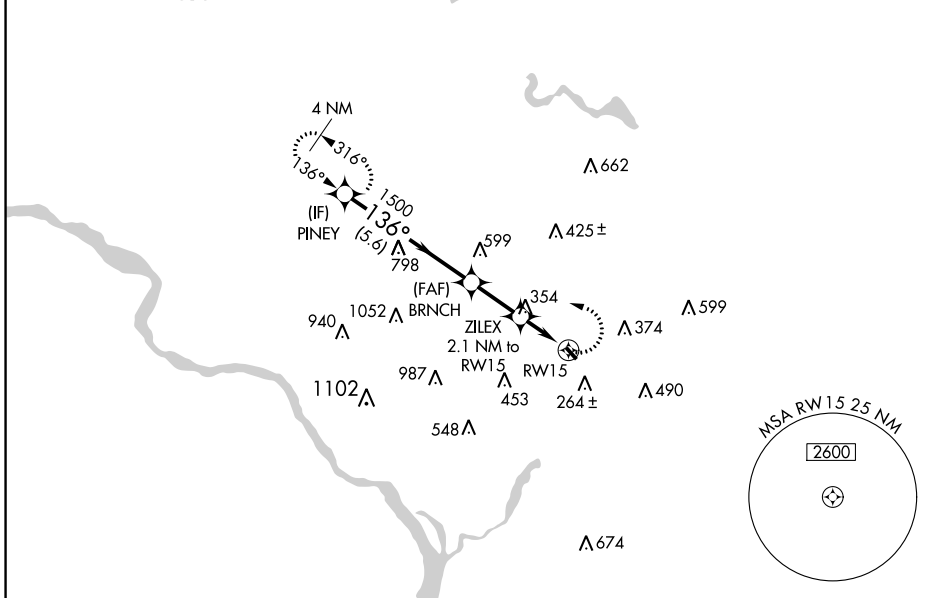
APP CRS 136°	Rwy Idg TDZE Apt Elev	N/A N/A 48
------------------------	-----------------------------	---------------------------------------

RNAV (GPS)-A
COLLEGE PARK (CGS)

▽	DME/DME RNP-0.3 NA.	MISSED APPROACH: Climbing left turn to 2100 direct PINEY and hold.
----------	---------------------	--

AWOS-3 121.225	POTOMAC APP CON 125.65 348.725	UNICOM 122.975 (CTAF) ①
--------------------------	--	--

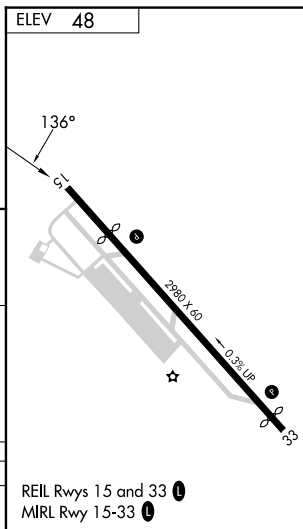
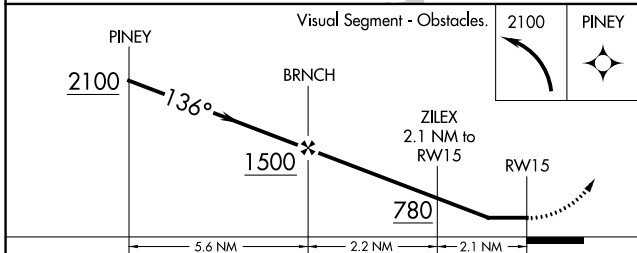
RADAR REQUIRED



NE-3, 08 AUG 2024 to 05 SEP 2024

NE-3, 08 AUG 2024 to 05 SEP 2024

ELEV 48	Visual Segment - Obstacles.			2100	PINEY



CATEGORY	A	B	C	D
① CIRCLING	660-1 612 (700-1)	720-1 672 (700-1)	NA	

REIL Rwys 15 and 33 **①**
MIRL Rwy 15-33 **①**