

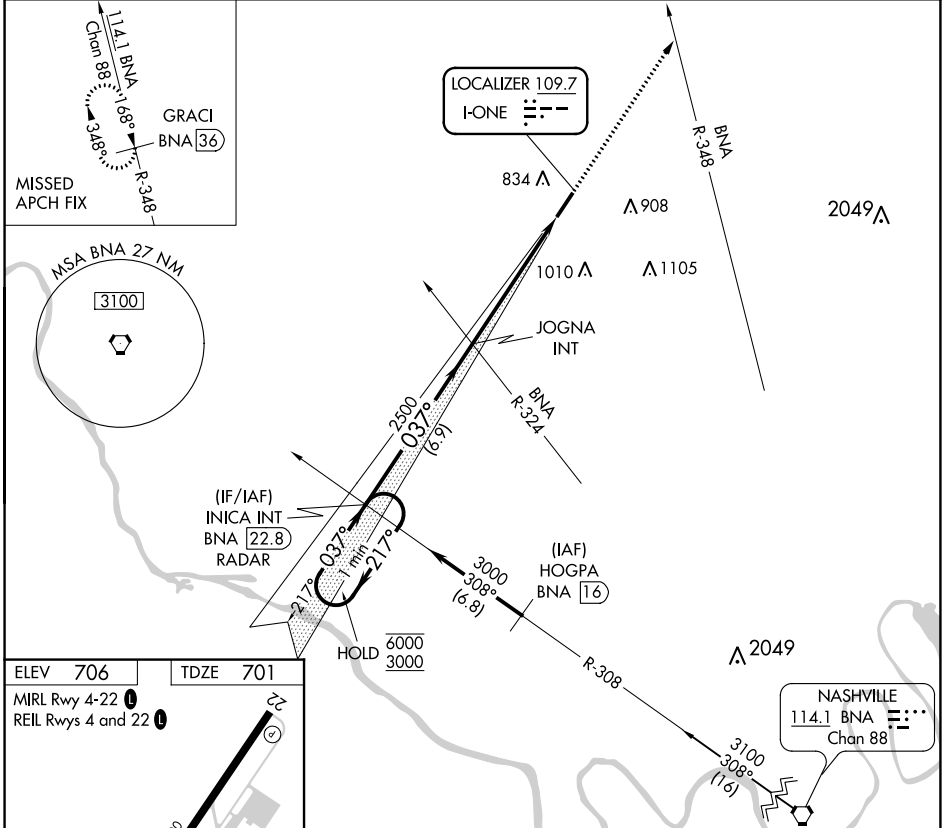
LOC RWY 4

SPRINGFIELD ROBERTSON COUNTY (M91)

LOC I-ONE 109.7	APP CRS 037°	Rwy Idg 5505 TDZE 701 Apt Elev 706
---------------------------	------------------------	---------------------------------------------------------------

NA Rwy 4 helicopter visibility reduction below 3/4 SM NA. MISSED APPROACH: Climb to 3100 on heading 037° and BNA VORTAC R-348, to GRACI/BNA 36 DME and hold.

AWOS-3 120.675	NASHVILLE APP CON 119.35 372.0	UNICOM 123.0 (CTAF) 0
--------------------------	------------------------------------------	---------------------------------



ELEV 706 TDZE 701

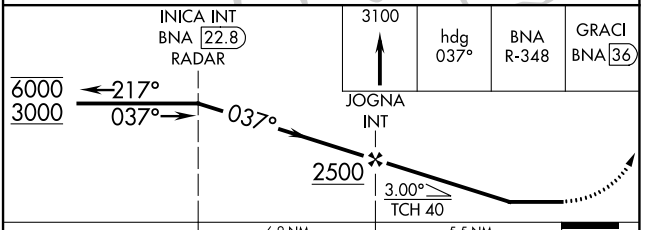
MIRL Rwy 4-22 (L)
REIL Rws 4 and 22 (L)

5505 x 100

037°

FAF to MAP 5.5 NM

Knots	60	90	120	150	180
Min:Sec	5:30	3:40	2:45	2:12	1:50



CATEGORY	A	B	C	D
S-4	1180-1 479 (500-1)		1180-1 ³ / ₈ 479 (500-1 ³ / ₈)	
<input checked="" type="checkbox"/> CIRCLING	1180-1 474 (500-1)		1360-1 ³ / ₄ 654 (700-1 ³ / ₄)	1540-2 ³ / ₄ 834 (900-2 ³ / ₄)

LOC RWY 4

SE-1, 08 AUG 2024 to 05 SEP 2024

SE-1, 08 AUG 2024 to 05 SEP 2024