

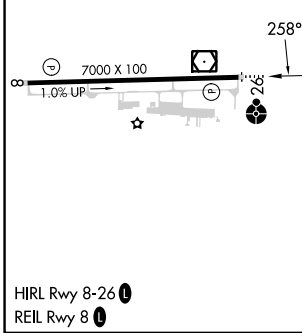
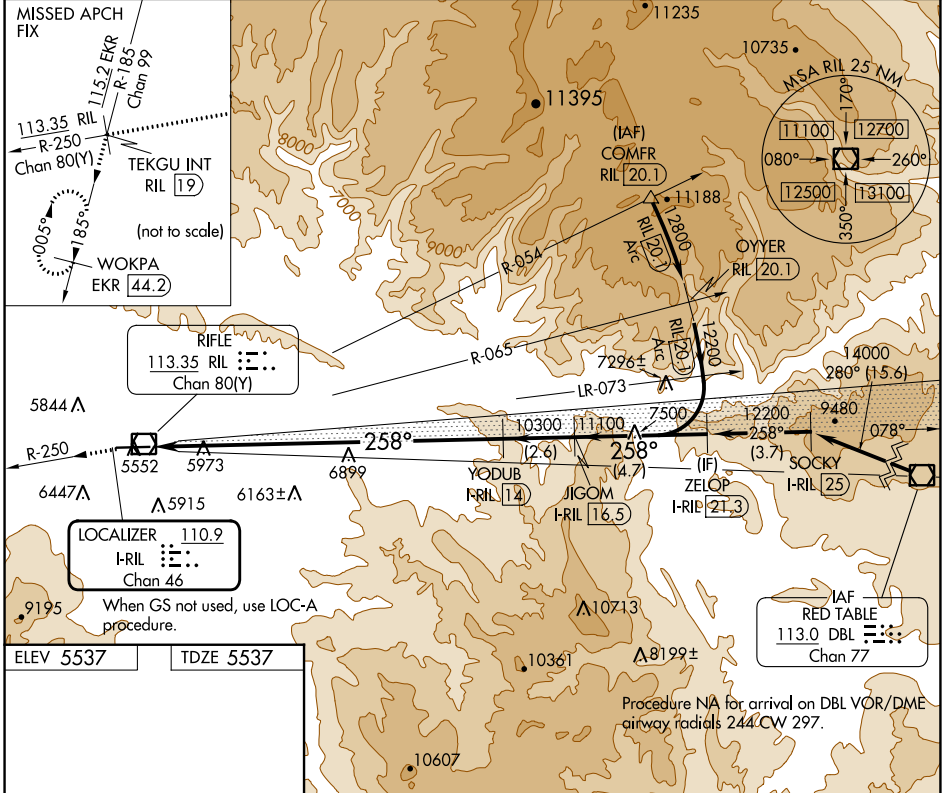
LOC/DME I-RIL 110.9 Chan 46	APP CRS 258°	Rwy Idg TDZE Apt Elev 7000 5537 5537
--	------------------------	--

ILS RWY 26

RIFLE GARFIELD COUNTY (R.I.L.)

DME required.	ODALS	MISSED APPROACH: Climb to 14000 on RIL VOR/DME R-250 to TEKGU INT/RIL 19 DME and on EKR VOR/DME R-185 to WOKPA/EKR 44.2 DME and hold. Missed approach requires a minimum climb of 340 feet per NM to 10300; if unable to meet climb gradient, see LOC-A.
<p>▼ ▲ ☼ -14°C</p> <p>Rwy 26 helicopter visibility reduction below 3/4 SM NA.</p>		

ASOS 135.275	DENVER CENTER 134.95 327.075	UNICOM 122.8 (CTAF) 0
------------------------	--	---------------------------------



ELEV 5537	TDZE 5537	
14000	TEKGU INT	EKR R-185
↑	WOKPA EKR 44.2	Use I-RIL DME when on localizer course.
RIL R-250	YODUB I-RIL 14	JIGOM I-RIL 16.5
	ZELOP I-RIL 21.3	
	10300	11100
	10300	12200
	12.6 NM	2.6 NM
		4.7 NM
CATEGORY	A	B
	C	D
S-ILS 26	6800-4 1263 (1300-4)	
	GS 3.50° TCH 56	

SW-1, 08 AUG 2024 to 05 SEP 2024

SW-1, 08 AUG 2024 to 05 SEP 2024