

WAAS CH 99343 W17A	APP CRS 167°	Rwy Idg TDZE Apt Elev	5000 2991 2991
--	------------------------	-----------------------------	---

RNAV (GPS) RWY 17

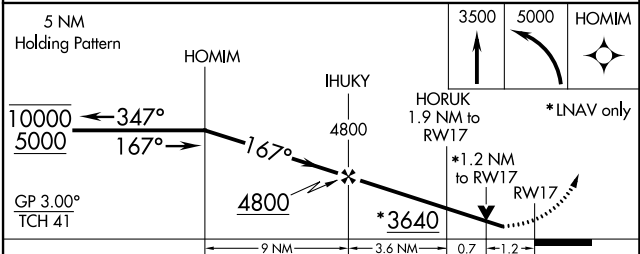
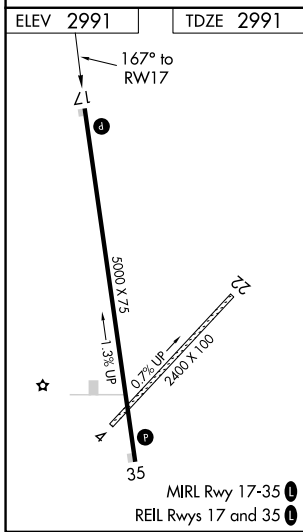
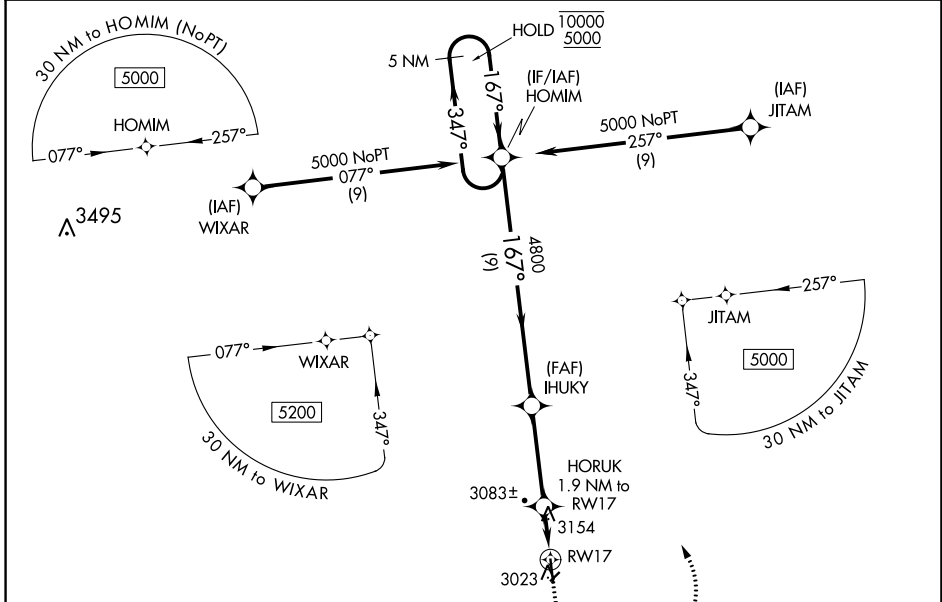
ATWOOD-RAWLINS COUNTY CITY-COUNTY (ADT)

RNP APCH.

▼ Circling NA to Rwy 4 and 22. Circling Rwy 35 NA at night. Baro-VNAV and VDP NA when using Colby altimeter setting. Rwy 17 helicopter visibility reduction below 3/4 SM NA. For uncompensated Baro-VNAV systems, LNAV/VNAV NA below -20°C or above 54°C. When local altimeter setting not received, use Colby altimeter setting; increase all DAs to 3326 feet; increase all MDAs 100 feet and visibility Cats C and D 1/4 mile.

▲ NA MISSED APPROACH: Climb to 3500 then climbing left turn to 5000 direct HOMIM and hold.

AWOS-3 118.675	DENVER CENTER 132.7 226.675	UNICOM 122.7 (CTAF) 0
--------------------------	---------------------------------------	---------------------------------



CATEGORY	A	B	C	D
LPV DA		3241-1	250 (300-1)	
LNAV/VNAV DA		3241-1	250 (300-1)	
LNAV MDA	3420-1	429 (500-1)	3420-1 1/4	429 (500-1 1/4)
CIRCLING	3480-1	489 (500-1)	3560-1 1/2 569 (600-1 1/2)	3620-2 629 (700-2)

NC-2, 08 AUG 2024 to 05 SEP 2024

NC-2, 08 AUG 2024 to 05 SEP 2024