

APP CRS <b>280°</b>	Rwy ldg TDZE Apt Elev	<b>N/A</b> <b>N/A</b> <b>828</b>
------------------------	-----------------------------	--

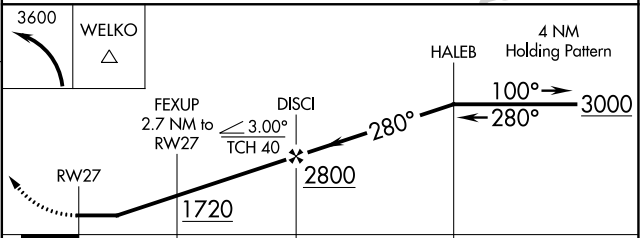
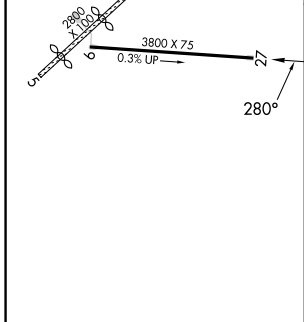
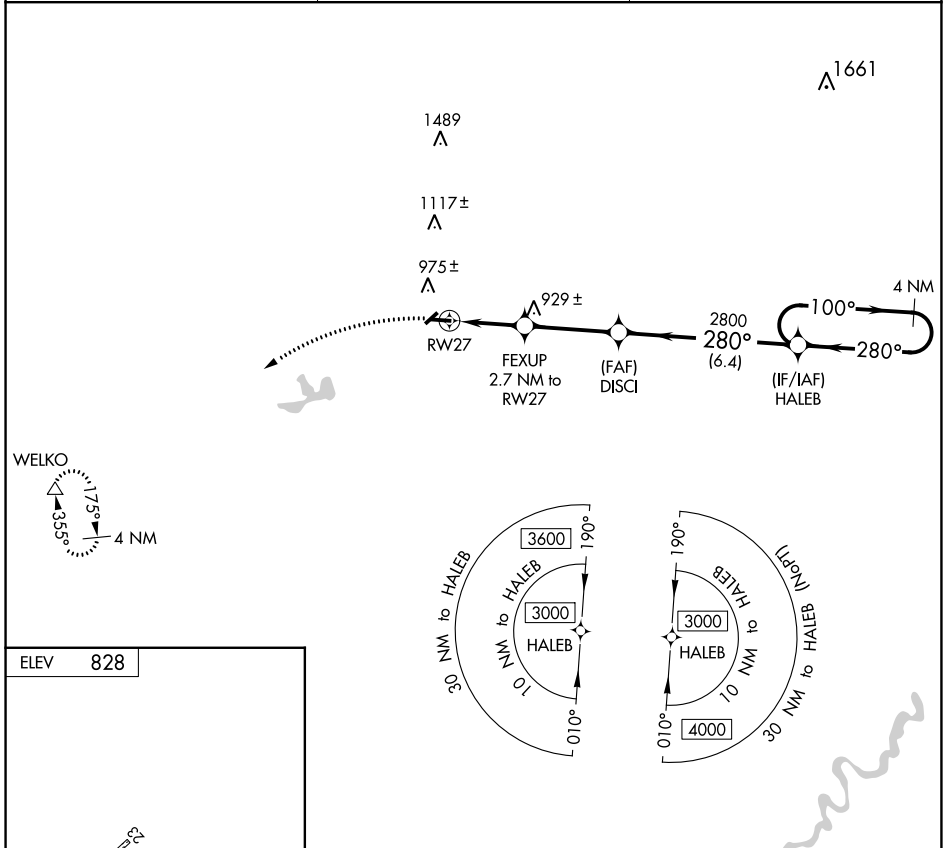
# RNAV (GPS)-A

BALDWIN MUNI (7D3)

**▼** Circling NA to Rwy's 5 and 23. DME/DME RNP-0.3 NA.  
**▲** NA Helicopter visibility reduction below 1 SM NA.  
 Use Fremont Muni altimeter setting. Procedure NA at night.

MISSED APPROACH: Climbing left turn to 3600 direct WELKO and hold.

FFX AWOS-3 <b>118.775</b>	MINNEAPOLIS CENTER <b>120.85 322.35</b>	CTAF <b>122.9</b>
------------------------------	--	----------------------



WELKO ▲	3600	4 NM Holding Pattern
HALEB	3000	100° →
DISCI	2800	← 280°
FEXUP 2.7 NM to RW27	1720	← 280°
RW27	2800	← 280°
2.7 NM	3.4 NM	6.4 NM

CATEGORY	A	B	C	D
<b>■</b> CIRCLING	1400-1	572 (600-1)	1400-1½ 572 (600-1½)	NA

EC-1, 08 AUG 2024 to 05 SEP 2024

EC-1, 08 AUG 2024 to 05 SEP 2024