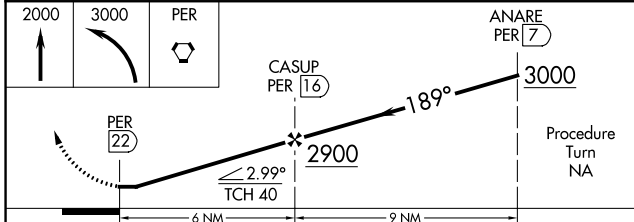
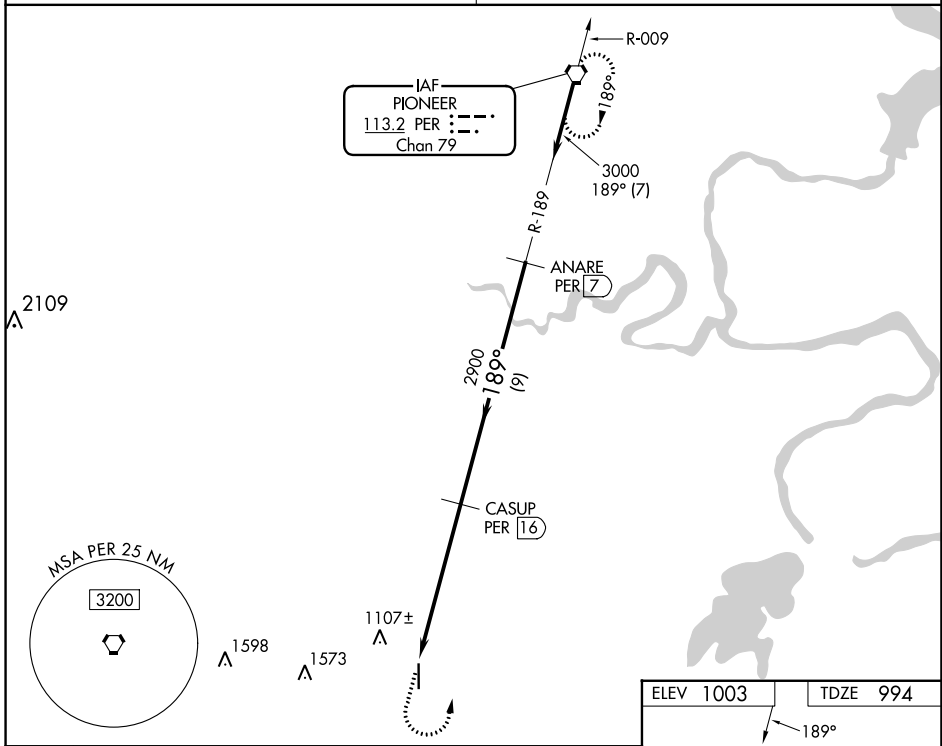


| | | |
|--|------------------------|--|
| VORTAC PER 113.2 Chan 79 | APP CRS 189° | Rwy Idg 5103 TDZE 994 Apt Elev 1003 |
|--|------------------------|--|

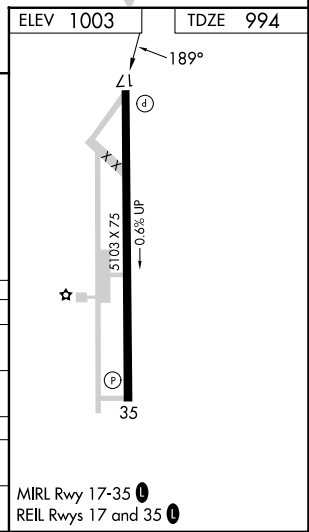
VOR RWY 17

PERRY MUNI (F22)

| | |
|---|---|
| <p>▼ Obtain local altimeter setting on CTAF; when not received, use Ponca City altimeter setting. DME required.</p> <p>▲ NA</p> | <p>MISSED APPROACH: Climb to 2000 then climbing left turn to 3000 direct PER VORTAC and hold.</p> |
| <p>KANSAS CITY CENTER 127.8 319.1</p> | <p>UNICOM 122.8 (CTAF) 0</p> |



| CATEGORY | A | B | C | D |
|---------------------------------------|-----------------------|-------------------------|-------------------------|----|
| S-17 | 1500-1 506 (500-1) | 1500-1¼ 506 (500-1¼) | 1500-1½ 506 (500-1½) | NA |
| CIRCLING | 1500-1 497 (500-1) | 1500-1¼ 497 (500-1¼) | 1620-1¾ 617 (700-1¾) | NA |
| PONCA CITY ALTIMETER SETTING MINIMUMS | | | | |
| S-17 | 1560-1 566 (600-1) | 1560-1¼ 566 (600-1¼) | 1560-1⅝ 566 (600-1⅝) | NA |
| CIRCLING | 1560-1 557 (600-1) | 1560-1¼ 557 (600-1¼) | 1680-2 677 (700-2) | NA |



SC-1, 08 AUG 2024 to 05 SEP 2024

SC-1, 08 AUG 2024 to 05 SEP 2024