

APP CRS	Rwy Idg	<b>3504</b>
<b>189°</b>	TDZE	<b>1207</b>
	Apt Elev	<b>1208</b>

# RNAV (GPS) RWY 18

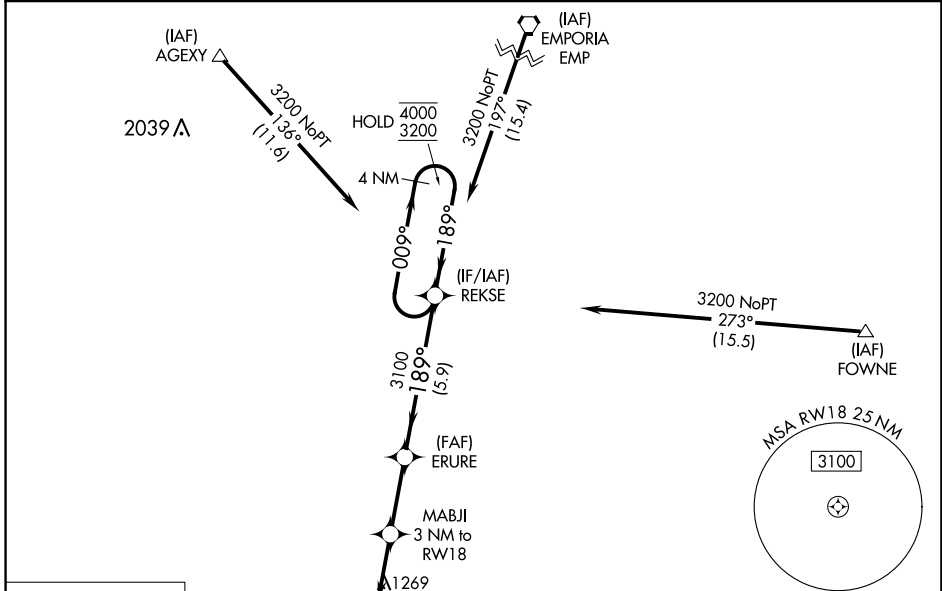
LT WILLIAM M MILLIKEN (13K)

RNP APCH - GPS.

**⚠** Circling NA to Rwys 8 and 26. VDP NA when using Emporia altimeter setting. When local altimeter setting not received, use Emporia altimeter setting and increase all MDAs 80 feet and LNAV Cat C visibility ¼ SM, Circling Cat C visibility ¼ SM.

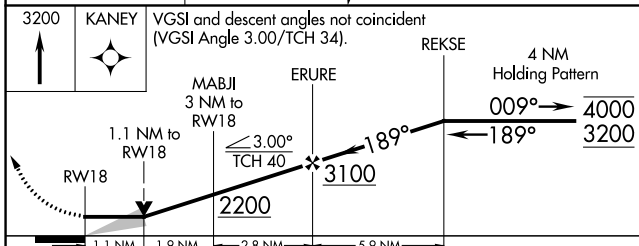
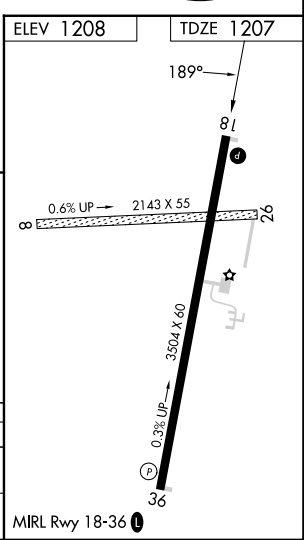
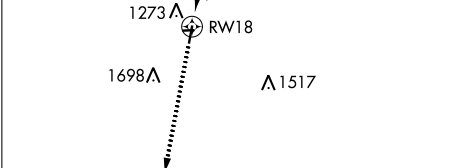
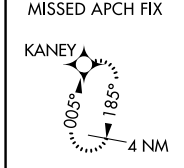
MISSED APPROACH: Climb to 3200 direct KANEY and hold.

AWOS-3PT <b>120.975</b>	KANSAS CITY CENTER <b>120.2 323.2</b>	UNICOM <b>122.8 (CTAF) 0</b>
----------------------------	------------------------------------------	---------------------------------



NC-2, 08 AUG 2024 to 05 SEP 2024

NC-2, 08 AUG 2024 to 05 SEP 2024



CATEGORY	A	B	C	D
LNAV MDA	1600-1	393 (400-1)	1600-1½ 393 (400-1½)	NA
CIRCLING	1640-1 432 (500-1)	1660-1 452 (500-1)	2060-2½ 852 (900-2½)	NA