

JEROME, IDAHO

AL-6812 (FAA)

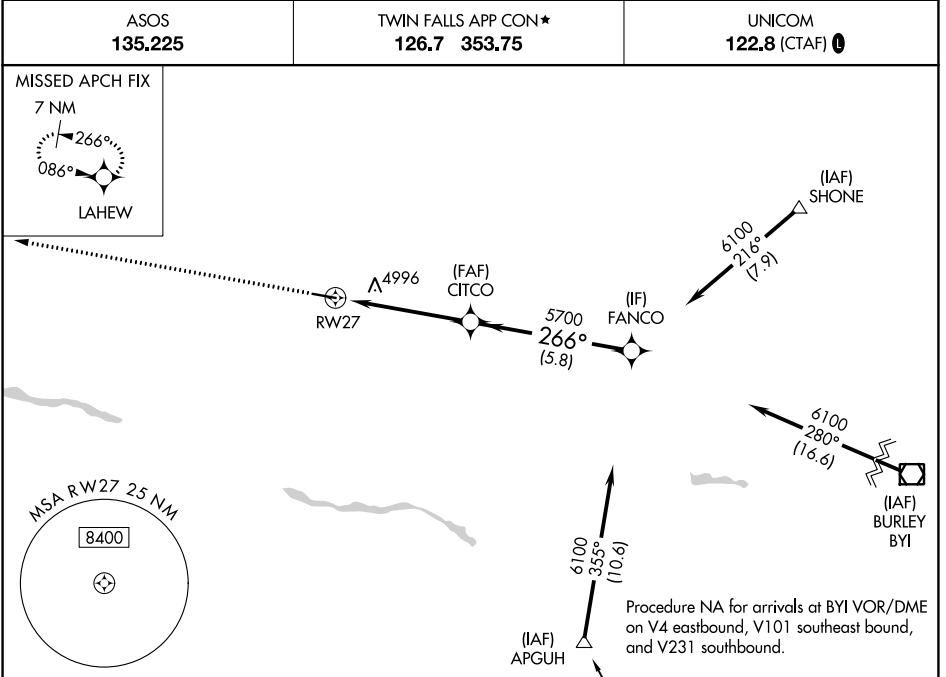
23054

WAAS CH <b>90514</b> <b>W27A</b>	APP CRS <b>266°</b>	Rwy Idg TDZE Apt Elev	<b>5002</b> <b>4053</b> <b>4053</b>
--	------------------------	-----------------------------	---

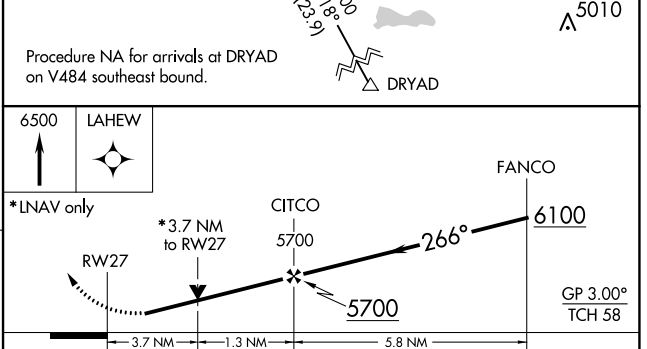
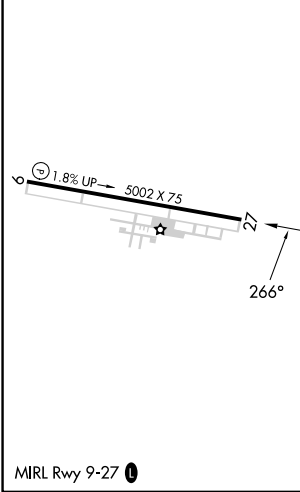
# RNAV (GPS) RWY 27

JEROME COUNTY (JER)

RNP APCH.	<p><b>▼</b> Circling NA north of Rwy 9 and 27. <b>▲</b> Rwy 27 helicopter visibility reduction below <math>\frac{3}{4}</math> SM NA.</p>	MISSED APPROACH: Climb to 6500 direct LAHEW and hold.
ASOS <b>135.225</b>		TWIN FALLS APP CON* <b>126.7 353.75</b>



ELEV 4053	TDZE 4053
-----------	-----------



CATEGORY	A	B	C	D
LPV DA	4403-1 350 (400-1)			
LNAV MDA	5300-1½ 1247 (1300-1¼)	5300-1½ 1247 (1300-1½)	5300-3	1247 (1300-3)
<b>C</b> CIRCLING	5300-1½ 1247 (1300-1¼)	5300-1½ 1247 (1300-1½)	5300-3	1247 (1300-3)

JEROME, IDAHO  
Amdt 1 30JAN20

42°44'N-114°27'W

# RNAV (GPS) RWY 27

NW-1, 08 AUG 2024 to 05 SEP 2024

NW-1, 08 AUG 2024 to 05 SEP 2024