

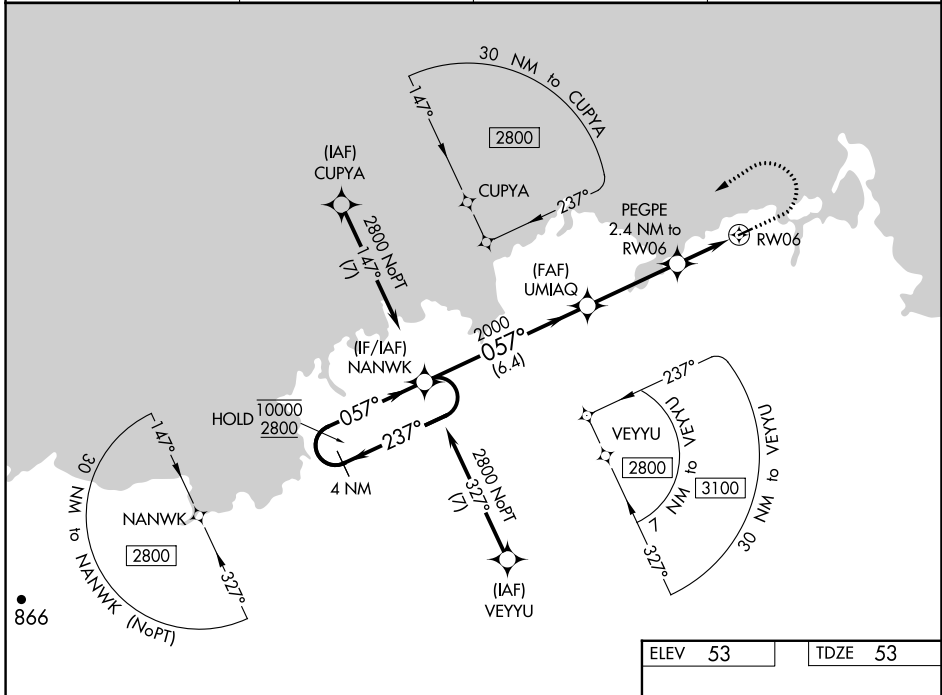
WAAS CH <b>78443</b> <b>W06A</b>	APP CRS <b>057°</b>	Rwy Idg TDZE Apt Elev	<b>3001</b> <b>53</b> <b>53</b>
--	------------------------	-----------------------------	---------------------------------------

# RNAV (GPS) RWY 6

MEKORYUK (MYU) (PAMY)

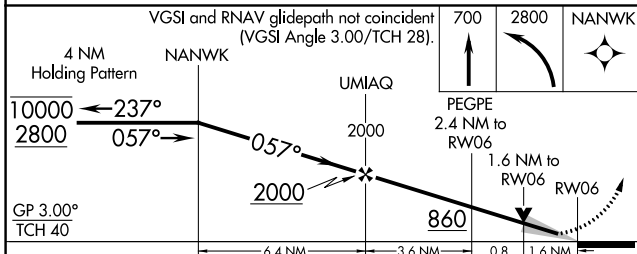
RNP APCH-GPS.		MISSED APPROACH: Climb to 700 then climbing left turn to 2800 direct NANWK and hold.	
Circling NA southeast of Rwy 6-24.			

AWOS-3P <b>123.9</b>	ANCHORAGE CENTER <b>124.5 372.0</b>	KENAI RADIO <b>122.0</b>	CTAF <b>122.9 0</b>
-------------------------	--	-----------------------------	------------------------



AK, 11 JUL 2024 to 05 SEP 2024

AK, 11 JUL 2024 to 05 SEP 2024



ELEV 53	TDZE 53
---------	---------

CATEGORY	A	B	C	D
LPV DA		303-1	250 (300-1)	
LNAV/VNAV DA		303-1	250 (300-1)	
LNAV MDA	580-1	527 (600-1)	580-1½	527 (600-1½)
CIRCLING	580-1 527 (600-1)	640-1 587 (600-1)	660-1¾ 607 (700-1¾)	860-2½ 807 (900-2½)

