

WAAS CH 97334 W24A	APP CRS 227°	Rwy Idg 3798 TDZE 596 Apt Elev 597
--	------------------------	---

RNAV (GPS) RWY 24

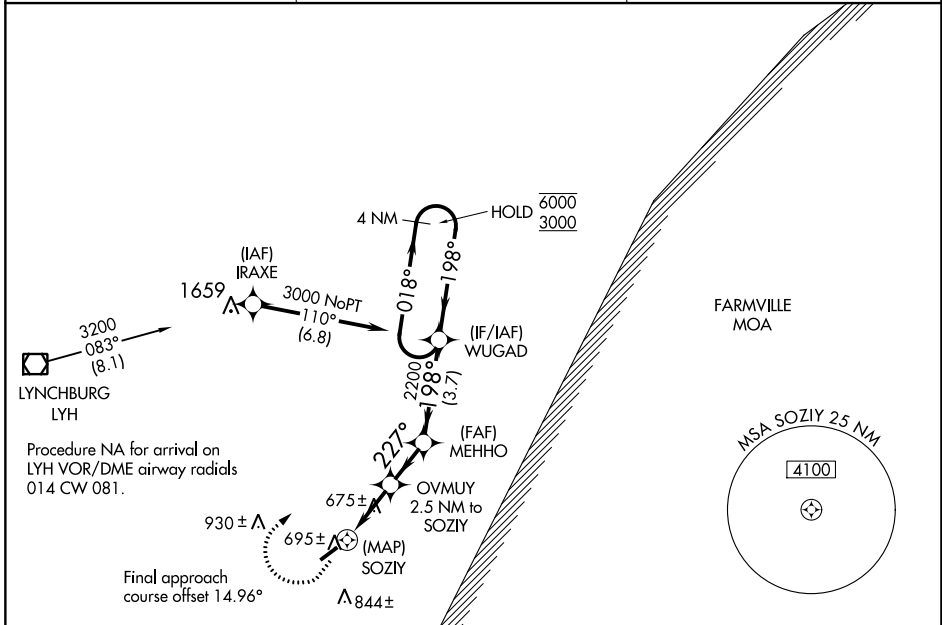
BROOKNEAL/CAMPBELL COUNTY (ØV4)

RNP APCH.

▼ When local altimeter setting not received, use Lynchburg Rgnl/Preston Glenn Fld altimeter setting and increase all MDA 100 feet.

▲ MISSED APPROACH: Climb to 1000 then climbing right turn to 3000 direct WUGAD and hold.

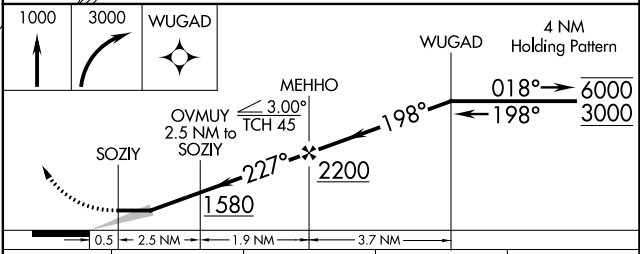
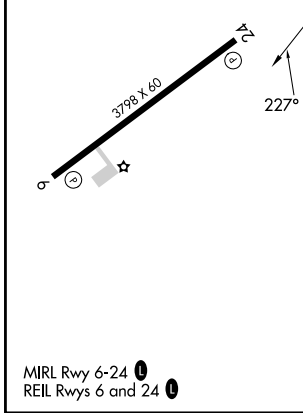
AWOS-3 120.575	ROANOKE APP CON 135.0 254.325	UNICOM 122.7 (CTAF) 0
--------------------------	---	---------------------------------



NE-3, 08 AUG 2024 to 05 SEP 2024

NE-3, 08 AUG 2024 to 05 SEP 2024

ELEV 597	TDZE 596
----------	----------



CATEGORY	A	B	C	D
LP MDA	940-1	344 (400-1)	NA	
LNAV MDA	960-1	364 (400-1)	NA	
C CIRCLING	1120-1 523 (600-1)	1180-1 583 (600-1)	NA	