

BARMY FIVE DEPARTURE (RNAV)

SE-2, 08 AUG 2024 to 05 SEP 2024

CHARLOTTE DEP CON
134.75 257.2
AWOS-3
119.675
CLNC DEL (GCO)
124.9
UNICOM
123.05

TOP ALTITUDE:
3000

RNAV 1 - DME/DME/IRU or GPS.
RADAR required.

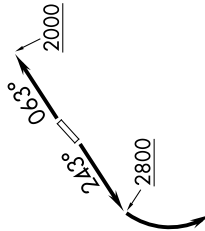
DATTO

RALEIGH/DURHAM
RDU

TAR RIVER
TYI

NOTE: For turbo jets only.
NOTE: If unable to accept climb rates, advise ATC on initial contact.
NOTE: Transponder code will be issued via PDC or Charlotte CLNC DEL.
NOTE: Upon reaching 10000 MSL, accelerate to and maintain 280K, if unable advise ATC.

OLUBE



EBOOK

BATTA

FL180 *1900
077° (39)

10400
*2100
077° (13)

BARMY

GULFY

MESHY

088° (18)

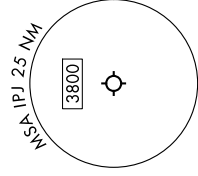
FL180 *2300
048° (22)

FL180 *3300
078° (17)

084°

FL180 *3400
(70)

TAKEOFF MINIMUMS
Rwys 5, 23: Standard.



NOTE: Chart not to scale.

DEPARTURE ROUTE DESCRIPTION

TAKEOFF RUNWAY 5: Climb on heading 063° to 2000 before proceeding on course, then on heading assigned by ATC, thence. . . .
TAKEOFF RUNWAY 23: Climb on heading 243° to 2800 before turning left, then on heading assigned by ATC, thence. . . .

. . . on RADAR vectors to MESHY, then on depicted route to BARMY. Then on assigned transition. Maintain 3000, expect clearance to filed altitude within 10 minutes after departure.

NUTZE TRANSITION (BARMY5.NUTZE)
RALEIGH/DURHAM TRANSITION (BARMY5.RDUJ)
TAR RIVER TRANSITION (BARMY5.TYI)

SE-2, 08 AUG 2024 to 05 SEP 2024

BARMY FIVE DEPARTURE (RNAV)