

LOC/DME I-OBG 111.9 Chan 56	APP CRS 334°	Rwy Idg TDZE Apt Elev	5199 4205 4218
--	------------------------	-----------------------------	---

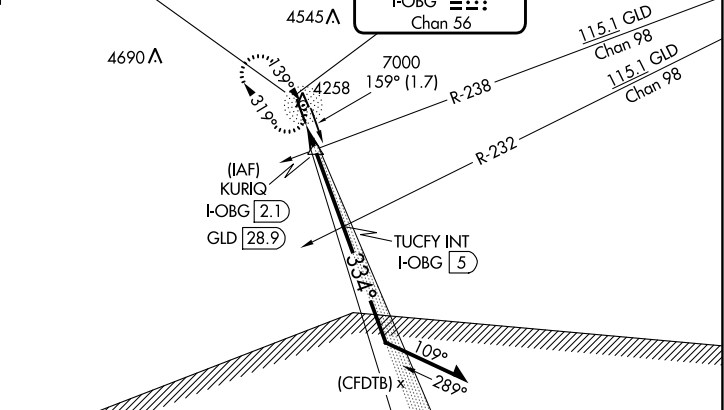
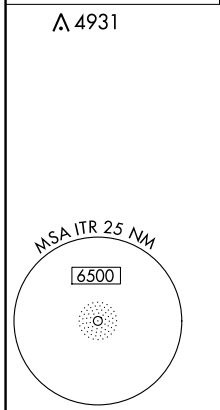
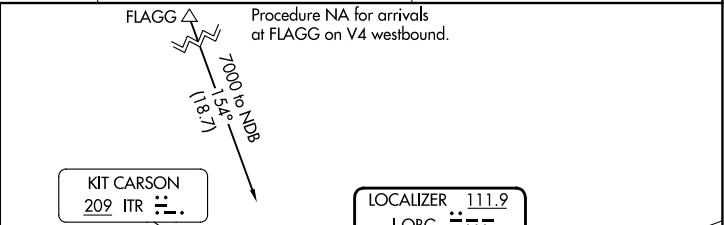
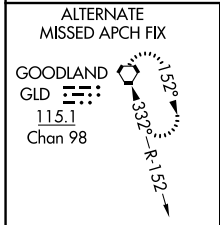
LOC RWY 33

KIT CARSON COUNTY (ITR)

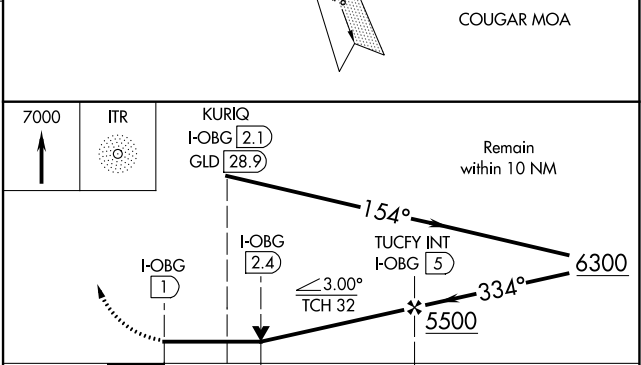
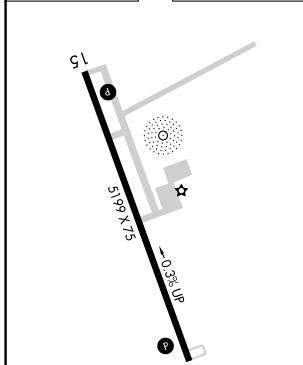
ADF required.

MISSED APPROACH: Climb to 7000 direct ITR NDB and hold, continue climb-in-hold to 7000.

ASOS 135.225	DENVER CENTER 132.7 226.675	UNICOM 122.8 (CTAF) 0
------------------------	---------------------------------------	---------------------------------



ELEV 4218	TDZE 4205
-----------	-----------



CATEGORY	A	B	C	D
S-33	4680-1	475 (500-1)	4680-1 $\frac{3}{8}$	475 (500-1 $\frac{3}{8}$)
<input checked="" type="checkbox"/> CIRCLING	4680-1 462 (500-1)	4700-1 482 (500-1)	4860-1 $\frac{3}{4}$ 642 (700-1 $\frac{3}{4}$)	4860-2 642 (700-2)

BURLINGTON, COLORADO
Amdt 1A 03NOV22

39°15'N-102°17'W

KIT CARSON COUNTY (ITR) LOC RWY 33

SW-1, 08 AUG 2024 to 05 SEP 2024

SW-1, 08 AUG 2024 to 05 SEP 2024