

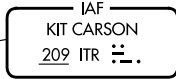
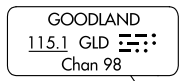
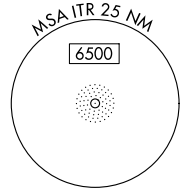
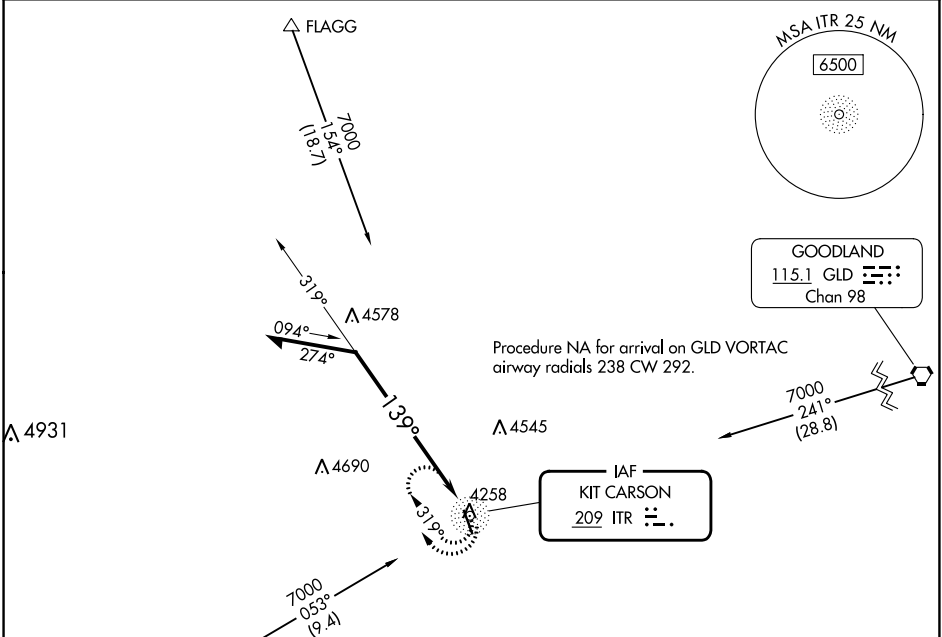
NDB ITR 209	APP CRS 139°	Rwy Idg TDZE Apt Elev	5199 4218 4218
-----------------------	------------------------	-----------------------------	---

NDB RWY 15

KIT CARSON COUNTY (ITR)

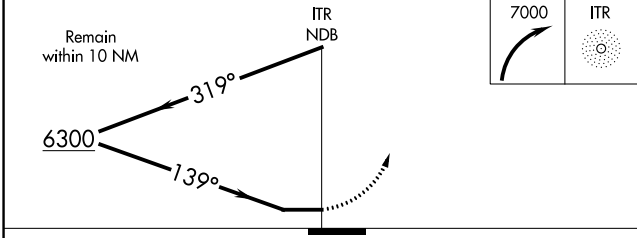
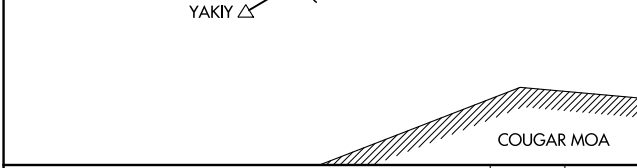
MISSED APPROACH: Climbing right turn to 7000 in ITR NDB holding pattern, continue climb-in-hold to 7000.

ASOS 135.225	DENVER CENTER 132.7 226.675	UNICOM 122.8 (CTAF)
------------------------	---------------------------------------	-------------------------------

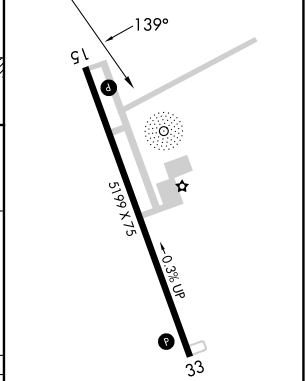


SW-1, 08 AUG 2024 to 05 SEP 2024

SW-1, 08 AUG 2024 to 05 SEP 2024



ELEV 4218	TDZE 4218
-----------	-----------



CATEGORY	A	B	C	D
S-15	4940-1	722 (800-1)	4940-2	722 (800-2)
C CIRCLING	4940-1	722 (800-1)	4940-2	4940-2 1/4 722 (800-2 1/4)

MIRL Rwy 15-33
REIL Rwys 15 and 33