

RNAV (GPS) RWY 35

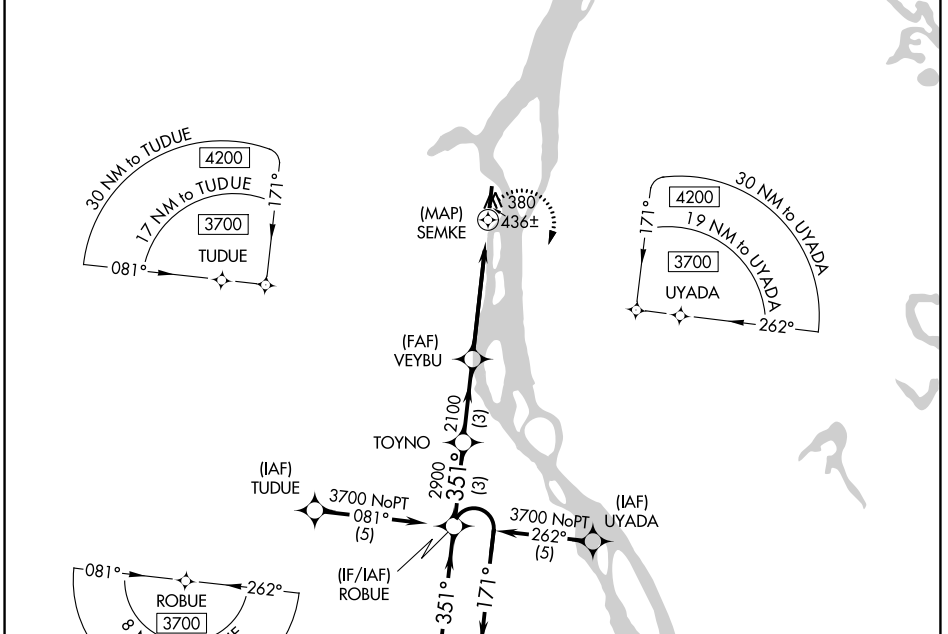
ANVIK (ANV)(PANV)

APP CRS 351°	Rwy Idg 4000
	TDZE 297
	Apt Elev 297

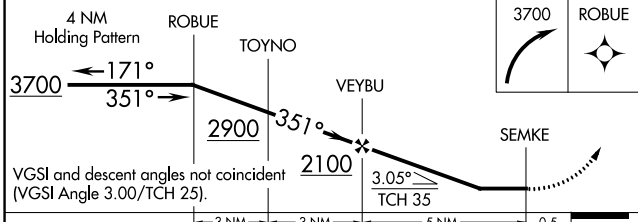
RNP APCH - GPS.

MISSED APPROACH: Climbing right turn to 3700 direct ROBUE and hold, continue climb-in-hold to 3700.

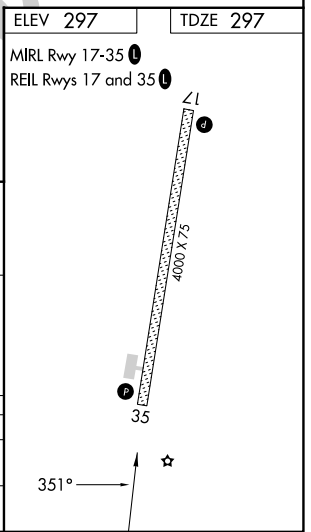
AWOS-3P 133.55	ANCHORAGE CENTER 135.7 335.5	KENAI RADIO 122.4	UNICOM 122.7 (CTAF) 0
--------------------------	--	-----------------------------	---------------------------------



ELEV 297	TDZE 297
MRL Rwy 17-35 0	
REL Rwy 17 and 35 0	



CATEGORY	A	B	C	D
RNAV MDA	780-1	483 (500-1)	780-1 $\frac{3}{8}$	483 (500-1 $\frac{3}{8}$)
CIRCLING	840-1	543 (600-1)	840-1 $\frac{1}{2}$	860-2
			543 (600-1 $\frac{1}{2}$)	563 (600-2)



AK, 11 JUL 2024 to 05 SEP 2024

AK, 11 JUL 2024 to 05 SEP 2024