

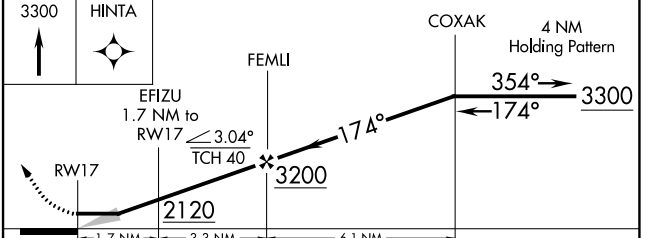
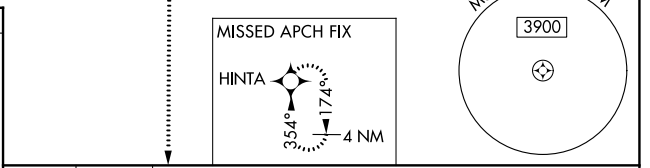
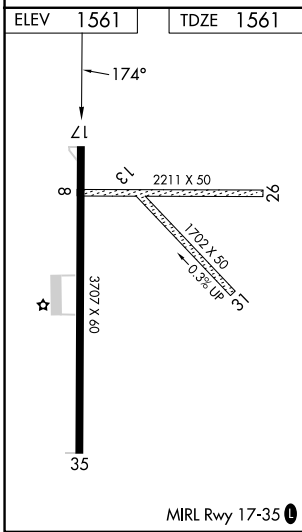
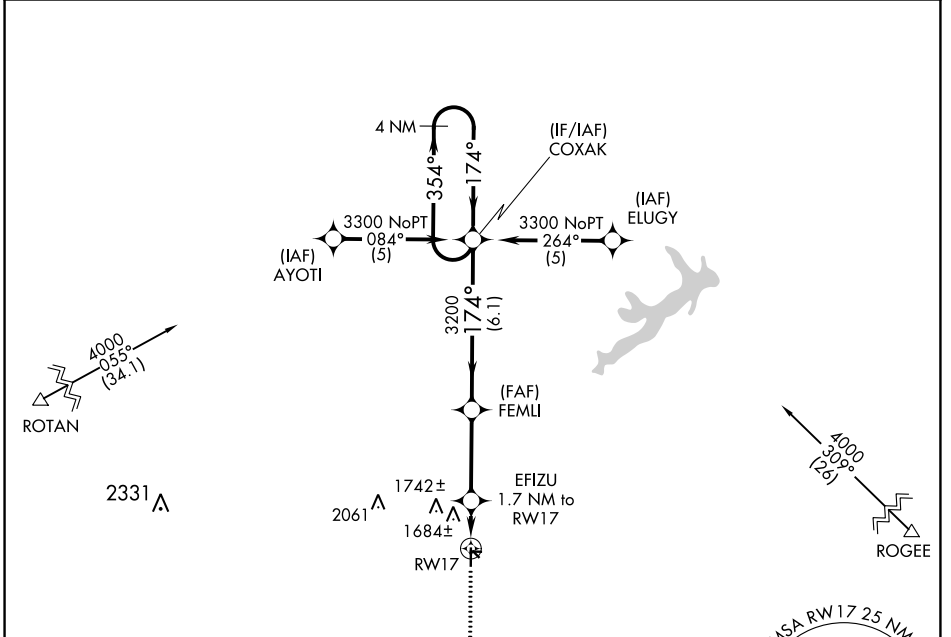
APP CRS	Rwy ldg	3707
174°	TDZE	1561
	Apt Elev	1561

RNAV (GPS) RWY 17

ARLEDGE FLD (F56)

RNP APCH-GPS.	MISSED APPROACH: Climb to 3300 direct HINTA and hold.
<p>Procedure NA at night. Use Abilene Rgnl altimeter setting; when not received use Breckenridge altimeter setting and increase all MDAs 40 feet.</p> <p>Rwy 17 helicopter visibility reduction below 1 SM NA.</p>	

ABILENE APP CON 127.2 282.3	UNICOM 122.8 (CTAF) 0
---------------------------------------	---------------------------------



CATEGORY	A	B	C	D
LNAV MDA	2040-1	479 (500-1)	2040-1 $\frac{3}{8}$ 479 (500-1 $\frac{3}{8}$)	NA
CIRCLING	2100-1 539 (600-1)	2200-1 639 (700-1)	2220-1 $\frac{3}{4}$ 659 (700-1 $\frac{3}{4}$)	NA

RNAV (GPS) RWY 17

SC-2, 08 AUG 2024 to 05 SEP 2024

SC-2, 08 AUG 2024 to 05 SEP 2024