

WAAS CH <b>90535</b> <b>W17A</b>	APP CRS <b>174°</b>	Rwy Idg <b>4000</b> TDZE <b>600</b> Apt Elev <b>600</b>
--	------------------------	---

# RNAV (GPS) RWY 17

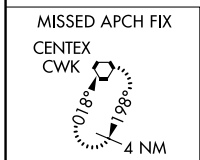
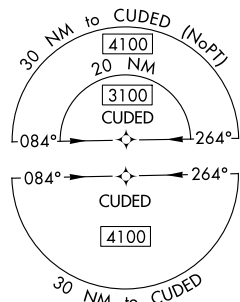
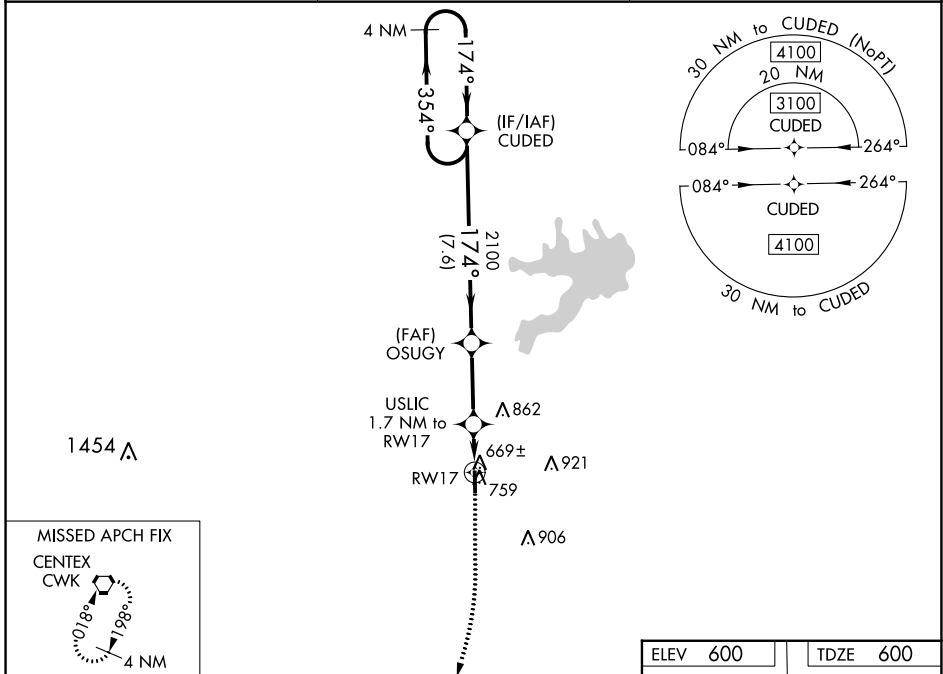
TAYLOR MUNI (T74)

RNP APCH.

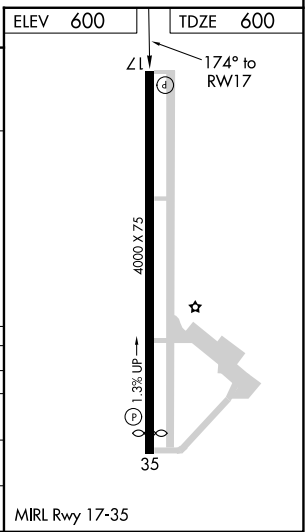
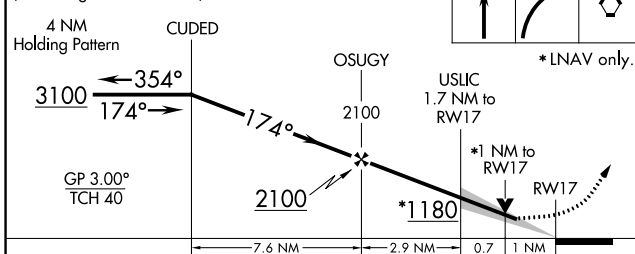
**▼** For uncompensated Baro-VNAV systems, LNAV/VNAV NA below -16C or above 54C. When local altimeter setting not received, use Austin Exec altimeter setting and increase all DA to 914 feet and all MDA 40 feet. VDP and Baro-VNAV NA when using Austin Exec altimeter setting.

**MISSED APPROACH:** Climb to 1100 then climbing right turn to 3100 direct CWK VORTAC and hold.

AWOS-3PT <b>119.75</b>	AUSTIN APP CON <b>127.225 317.65</b>	UNICOM <b>122.8 (CTAF)</b>
---------------------------	---	-------------------------------



VGSI and RNAV glidepath not coincident (VGSI Angle 3.00/TCH 40).



CATEGORY	A	B	C	D
LPV DA	882-7/8	282 (300-7/8)		NA
LNAV/VNAV DA	882-7/8	282 (300-7/8)		NA
LNAV MDA	960-1	360 (400-1)		NA
<b>C</b> CIRCLING	1100-1	500 (500-1)		NA

SC-3, 08 AUG 2024 to 05 SEP 2024

SC-3, 08 AUG 2024 to 05 SEP 2024