

WAAS CH 78009 W15A	APP CRS 148°	Rwy ldg TDZE Apt Elev	3700 1806 1806
---------------------------------	------------------------	-----------------------------	---

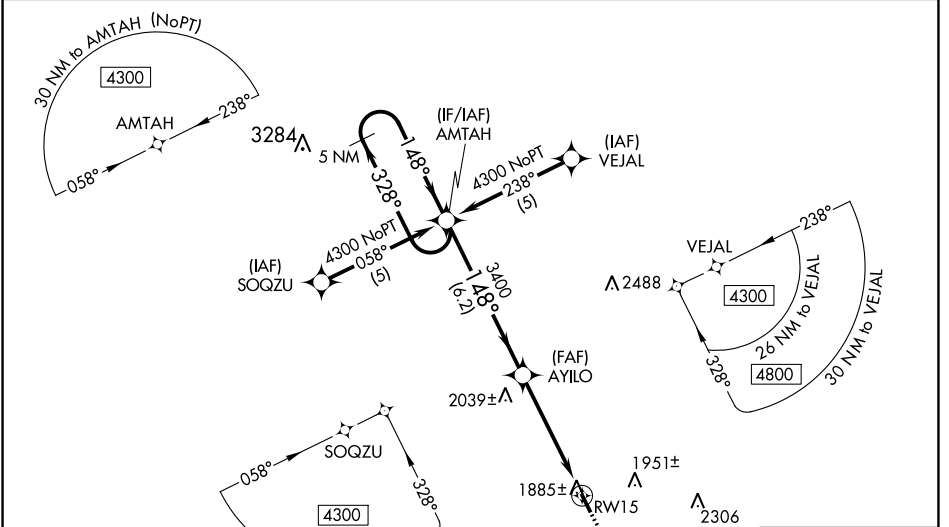
RNAV (GPS) RWY 15

ALBION MUNI (BVN)

⚠ For uncompensated Baro-VNAV systems, LNAV/VNAV NA below -18°C (0°F) or above 54°C (130°F). DME/DME RNP-0.3 NA. Visibility reduction by helicopters NA. When local altimeter setting not received, use Norfolk altimeter setting and increase all DA 106 feet, all MDA 120 feet, and increase LPV and LNAV/VNAV visibility ¼ mile all Cats. Baro-VNAV and VDP NA when using Norfolk altimeter setting.

MISSED APPROACH: Climb to 4300 direct AMIVY and hold.

AWOS-3 118.575	MINNEAPOLIS CENTER 128.0 257.95	CTAF 122.9 0
--------------------------	---	-------------------------------

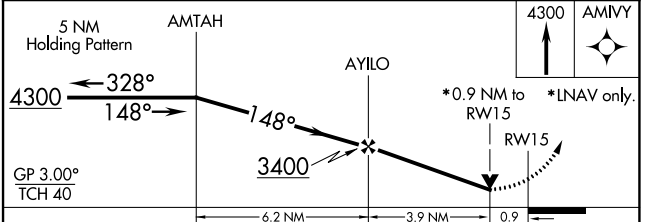
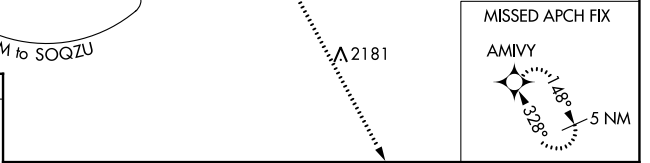
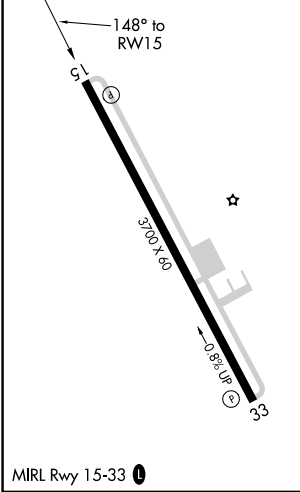


NC-2, 08 AUG 2024 to 05 SEP 2024

NC-2, 08 AUG 2024 to 05 SEP 2024



ELEV	1806	TDZE	1806
------	------	------	------



CATEGORY	A	B	C	D
LPV DA	2130-1 ¼	324 (400-1 ¼)		NA
LNAV/VNAV DA	2269-1 ¾	463 (500-1 ¾)		NA
LNAV MDA	2140-1	334 (400-1)		NA
CIRCLING	2360-1	2420-1		NA
	554 (600-1)	614 (700-1)		