

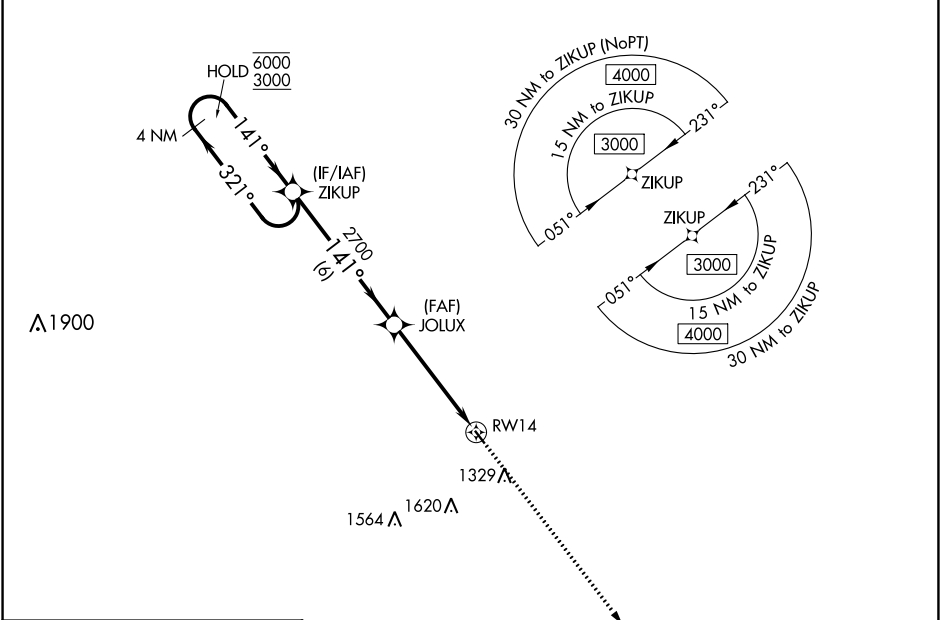
APP CRS	Rwy Idg	<b>2827</b>
<b>141°</b>	TDZE	<b>1116</b>
	Apt Elev	<b>1116</b>

# RNAV (GPS) RWY 14

WINTERSET MUNI (3Y3)

RNP APCH.	<p>▼ Circling NA for Cat B southwest of Rwy 14-32. Procedure NA at night.</p> <p>▲ NA Rwy 14 helicopter visibility reduction below 1 SM NA. Use Osceola altimeter setting.</p>	MISSED APPROACH: Climb to 3000 direct JUNUG and hold.
-----------	--	---

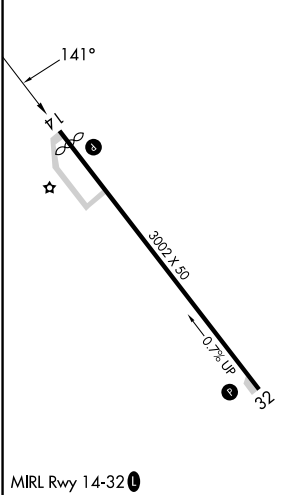
I75 AWOS-3 <b>120.975</b>	DES MOINES APP CON <b>123.9 360.7</b>	UNICOM <b>122.7 (CTAF) 0</b>
------------------------------	--	---------------------------------



NC-3, 08 AUG 2024 to 05 SEP 2024

NC-3, 08 AUG 2024 to 05 SEP 2024

ELEV 1116	TDZE 1116
-----------	-----------



MIRL Rwy 14-32 0  
WINTERSET, IOWA  
Amdt 1A 12AUG21

4 NM Holding Pattern				VGSi and descent angles not coincident (VGSi Angle 3.00/TCH 32).		3000	JUNUG
6000 ← 321°				141° →		↑	✦
3000				2700			
6 NM				4.9 NM			
CATEGORY	A	B	C	D			
LNAV MDA	1640-1	524 (600-1)	NA				
CIRCLING	1640-1	1700-1	NA				
	524 (600-1)	584 (600-1)					

41°22'N-94°01'W

# WINTERSET MUNI (3Y3)

## RNAV (GPS) RWY 14