

WAAS CH 72629 W18A	APP CRS 182°	Rwy Idg TDZE 1305 Apt Elev 1305	5012
--	------------------------	---	-------------

RNAV (GPS) RWY 18

HAMILTON MUNI (MNZ)

RNP APCH-GPS.

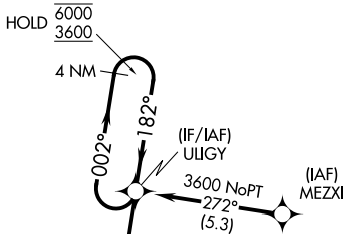
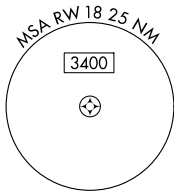
▼ Rwy 18 helicopter visibility reduction below ¼ SM NA.
For uncompensated Baro-VNAV systems, LNAV/VNAV NA below -17°C or above 54°C.

MISSED APPROACH: Climb to 3100 direct USXEL and hold.

AWOS-3PT
118.525

GRAY APP CON
120.075 323.15

UNICOM
122.7 (CTAF) 0

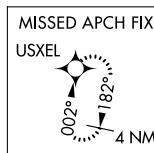
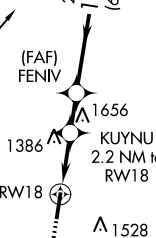


Procedure NA for arrivals at BUILT on V161 southbound.

Procedure NA for arrivals at SONET on V358 northeast bound.

1760

BUILT



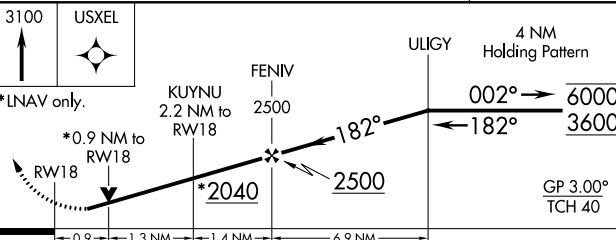
ELEV 1305 TDZE 1305

182° to RWY 18

81

5012 X 75

36



CATEGORY	A	B	C	D
LPV DA		1555-1	250 (300-1)	NA
LNAV/VNAV DA		1555-1	250 (300-1)	NA
LNAV MDA		1640-1	335 (400-1)	NA
CIRCLING	1680-1 375 (400-1)	1840-1 535 (600-1)	1960-1¾ 655 (700-1¾)	NA