

WAAS CH <b>77630</b> <b>W31A</b>	APP CRS <b>308°</b>	Rwy Idg TDZE Apt Elev	<b>3799</b> <b>2169</b> <b>2175</b>
--	------------------------	-----------------------------	---

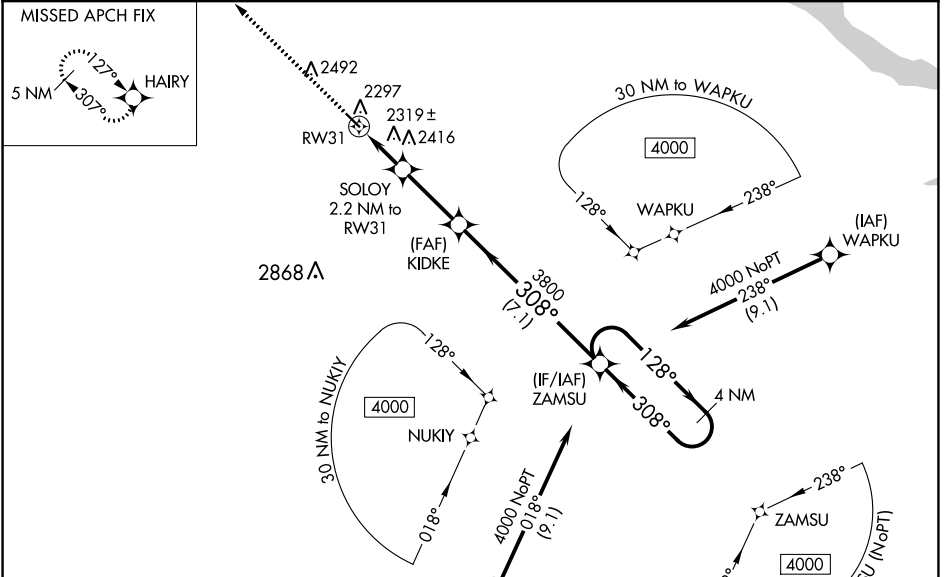
# RNAV (GPS) RWY 31

GREGORY MUNI-FLYNN FLD (9D1)

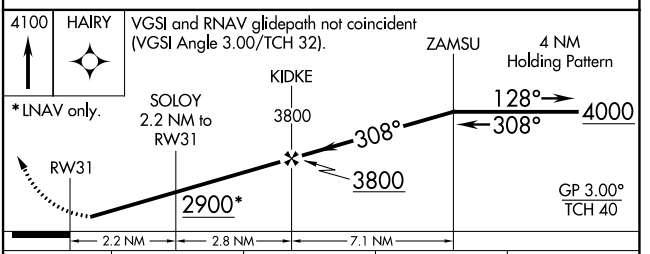
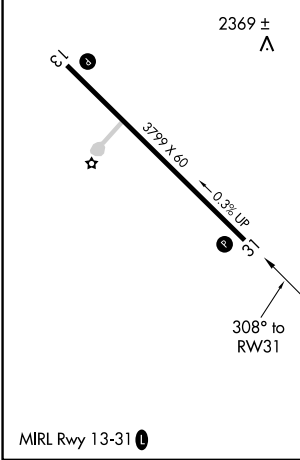
**NA** Helicopter visibility reduction below 1 SM NA. When VGSI inoperative, Circling Rwy 13 NA at night. Baro-VNAV NA. When VGSI inoperative, Straight-in/Circling Rwy 31 procedure NA at night. DME/DME RNP-0.3 NA. Use Winner altimeter setting; when not received use Ainsworth altimeter setting and increase all DA 95 feet and all MDA 100 feet and increase LPV all Cats visibility ¼ SM, LNAV/VNAV all Cats visibility ⅓ SM, LNAV Cat C and Circling Cat C visibility ¼ SM.

MISSED APPROACH: Climb to 4100 direct HAIRY and hold.

ICR ASOS <b>126.775</b>	MINNEAPOLIS CENTER <b>125.1 269.1</b>	GCO <b>121.725</b>	AUNICOM <b>122.8 (CTAF)</b>
----------------------------	--	-----------------------	--------------------------------



ELEV 2175	TDZE 2169
-----------	-----------



CATEGORY	A	B	C	D
LPV DA	2489-1 1/8 320 (400-1 1/8)			NA
LNAV/VNAV DA	2709-1 7/8 540 (600-1 7/8)			NA
LNAV MDA	2640-1 471 (500-1)		2640-1 3/8 471 (500-1 3/8)	NA
CIRCLING	2700-1 525 (600-1)	2780-1 605 (700-1)	2880-2 705 (800-2)	NA

NC-1, 08 AUG 2024 to 05 SEP 2024

NC-1, 08 AUG 2024 to 05 SEP 2024